

2017

Night Shift Work and Weight Gain among Female Filipino Nurses

Raymundo Mintac Apellido
Walden University

Follow this and additional works at: <https://scholarworks.waldenu.edu/dissertations>

 Part of the [Public Health Education and Promotion Commons](#)

This Dissertation is brought to you for free and open access by the Walden Dissertations and Doctoral Studies Collection at ScholarWorks. It has been accepted for inclusion in Walden Dissertations and Doctoral Studies by an authorized administrator of ScholarWorks. For more information, please contact ScholarWorks@waldenu.edu.

Walden University

College of Health Sciences

This is to certify that the doctoral dissertation by

Raymundo Apellido

has been found to be complete and satisfactory in all respects,
and that any and all revisions required by
the review committee have been made.

Review Committee

Dr. Cynthia Newell, Committee Chairperson, Health Services Faculty

Dr. Ronald Hudak, Committee Member, Health Services Faculty

Dr. LaToya Johnson, University Reviewer, Health Services Faculty

Chief Academic Officer

Eric Riedel, Ph.D.

Walden University

2017

Abstract

Night Shift Work and Weight Gain among Female Filipino Nurses

by

Raymundo Apellido

MSN, Walden University, 2012

BSN, Cabanatuan City Colleges, Philippines, 1979

Dissertation Submitted in Partial Fulfillment

of the Requirements for the Degree of

Doctor of Philosophy

Healthcare Administration

Walden University

January 2018

Abstract

The research problem is the increasing numbers of overweight and obese nurses working the night shift. Study on overweight and obesity among female Filipino nurses has not been conducted. It was important to conduct a research study among female Filipino nurses to find out if there are statistically significant associations between night shift work and weight gain. The purpose of this correlational and cross-sectional study was to determine if there are statistically significant associations between insufficient sleep, abnormal eating patterns, working 12-hour shifts, years of working night shift, age, stress, marital status, nursing units, decreased physical activity, and level of weight gain among female Filipino nurses working the night shift in the hospital. The theoretical base of this study was the locate evidence, evaluate evidence, assess evidence, and informed decision model. The survey questionnaire was constructed and an online survey through Survey Monkey was used to access nurses via a convenience sampling. Data were analyzed using Spearman correlation, multiple regression, and ANOVA. According to study findings, there were significant associations between insufficient sleep, abnormal eating patterns, marital status, 12-hour shifts, number of years working on night shift, and increased in body mass index. The implications for social change include information that nurses can use to better understand the negative implications of night shift work on health. At the organizational level, this study provides information for administrators and nursing leaders that might facilitate change in policies by improving working conditions for nurses.

Dedication

This is dedicated to my wife Belen Bautista-Apellido and my son Kristofer Raymond Apellido who heartedly understood all the times I spent on the computer writing paper after paper. To my brothers and sisters in the Philippines who are proud of my achievement, thank you for your continued support. To my nieces and nephews whom I sent to school in the Philippines, follow my steps.

Acknowledgments

A million thanks to my committee chair Dr. Cynthia Newell for her comments and feedbacks on every chapter of this dissertation process. Dr. Cynthia Newell provided me words of encouragements and endless support as I went through this long and difficult journey. I would also like to convey my heartfelt gratitude to my committee member Dr. Ronald Hudak for his detailed help in all the revisions of my document.

Table of Contents

List of Tables	vi
List of Figures.....	vii
Chapter 1: Introduction to the Study	1
Introduction	1
Background of the Study	2
Problem Statement.....	3
Purpose of the Study.....	5
Research Question and Hypotheses.....	6
Conceptual Framework	7
Nature of the Study.....	8
Definitions	9
Assumptions	12
Scope and Delimitations.....	12
Limitations.....	13
Significance of the Study.....	14
Summary.....	15
Chapter 2: Literature Review	17
Introduction	17
Literature Search Strategy	17
Theoretical Foundation.....	18
Contributory Factors of Weight Gain among Night Shift Nurses.....	22
Insufficient Sleep.....	22

Night Shift Work	23
Job Stress and 12-Hour Shifts	24
Age and Duration of Night Work	26
Marital status	27
Eating habits	27
Lack of physical activity	28
Obesity Trends in the United States	29
Obesity among nurses	29
Obesity Management and Prevention	31
Summary	33
Chapter 3: Research Method	35
Introduction	35
Purpose of the Study	35
Research Design and Methodology	35
Variables	35
Research Design	36
Population	37
Sample Procedure	37
Power Analysis	38
Procedure for Recruitment, Participation, and Data Collection	38
Recruitment and Participation	38
Data Collection	39
Pittsburg Sleep Quality Index	39

Perceived Stress Scale	40
Operationalization of Constructs	40
Dependent Variable	40
Independent Variables	41
Night shift	41
Insufficient sleep	41
Eating habits	41
Stress	42
Nursing units	42
Long work hours	43
Less physical movements	43
Age factor	43
Number of years on night shift	44
Gender	44
Race/ethnicity	44
Data Analysis Plan	45
Research Questions and Hypotheses	45
Threats to Validity	48
Ethical Considerations	48
Summary	49
Chapter 4: Data Collection and Analysis	51
Introduction	51
Data Collection	51

Data Analysis.....	52
Demographic Characteristics of Participants	52
Results	53
Frequencies and Percentages	53
Detailed Analysis.....	58
Research Questions and Hypothesis.....	58
Multiple Linear Regression	66
Summary.....	69
Chapter 5: Discussion, Limitations, Implications, and Conclusion	71
Introduction	71
Interpretation of the Findings	72
Insufficient Sleep and Abnormal Eating Patterns	72
Working 12-Hour Shifts and Number of Years on Night Shift.....	73
Age and Marital Status	75
Stress, Nursing Units, and Decreased Physical Activity	76
Analysis of Theoretical Framework	77
Limitations of the Study	78
Recommendations	79
Implications for Social Change	80
Conclusion.....	81
References	82
Appendix A: Invitation Letter	94
Appendix B: Survey Questionnaire.....	95

Appendix C: Perceived Stress Scale..... 101

List of Tables

Table 1	Frequency Table for Nominal Variables	54
Table 2	Descriptive Statistics of Continuous Variables	56
Table 3	Spearman Correlations between Insufficient Sleep, Abnormal Eating Patterns, and BMI	60
Table 4	Spearman Correlations between Working Night Shift, Shift Extending to 12 Hours, Length of Time in Current Shift, and BMI	61
Table 5	Spearman Correlations between Age and BMI	62
Table 6	ANOVA for BMI by Marital Status	63
Table 7	Means and Standard Deviations for BMI by Marital Status	63
Table 8	Spearman Correlations between Perceived Stress, Physical Activity, and BMI	64
Table 9	ANOVA for BMI by Specialty Unit	65
Table 10	Means and Standard Deviations for BMI by Specialty Unit	65
Table 11	Results for Regression with Factors Predicting BMI	69

List of Figures

Figure 1. Distribution of global PSQI scores.	57
Figure 2. Distribution of perceived stress scores.....	57
Figure 3. Distribution of BMI values.	58
Figure 4. Normal P-P plot for BMI level.	67
Figure 5. Standardized predicted values versus standardized residuals for the regression on BMI level.....	68

Chapter 1: Introduction to the Study

Introduction

Shift work, particularly night shift work, is an increasing part of the working schedule. Because night shifts allow for services to be provided around the clock, night shift work helps meet the demands of consumers in many businesses and industries. These businesses and industries include health care, transportation, law enforcement, communication, and manufacturing (Ramin et al., 2015). Health care providers, such as nurses, provide 24-hour patient care services in hospitals on different shifts. Nurses opt to work night shift for various reasons, including family obligations, babysitting issues, returning to school, and night differential pay. However, despite their work-related knowledge of health promotion, health education, and disease processes (Buss, 2012), nurses are often unaware of the negative health implications of working night shifts (Boughattas et al., 2014; Buja et al., 2013; Deori, 2012; Lin et al., 2012).

Night shift workers experience insufficient sleep, tiredness, and an inability to recover between shifts (Patterson, Buysse, Weaver, Calloway, & Yealy, 2015). Furthermore, Kim, Jeong, and Hong (2015) reported that insufficient sleep, even for one night, could cause energy expenditure and metabolic imbalance that have been associated with weight gain. Additionally, insufficient sleep can increase food consumption (Depner, Stothard, & Wright, 2014) by creating a need to replace sleep loss and energy by consuming more food (Spaeth, Dinges, & Goel, 2013).

Scholars have found that night shift nurses are at increased risk of weight gain. Hawkes et al. (2015) observed that attitudes and behaviors concerning food and body weight vary by culture. However, researchers have not focused on the increased risk of

weight gain in female Filipino nurses while working the night shift. This study was designed to explore the relationship between night shift work and weight gain among female Filipino nurses.

The implications for positive social change of this study include providing information that might facilitate changes in policies and working conditions that promote the health and well-being of nurses. Enhancing the health of the nursing workforce on the night shift and promoting sleep-hygiene initiatives could prevent the development of conditions associated with weight gain, such as heart diseases, hypertension, diabetes, stroke, and some forms of cancer (Center for Disease Control and Prevention [CDC], 2014). Also, according to the CDC (2014), the expected medical costs for overweight people were \$1,429 higher annually than the costs of those of normal weight. Therefore, enhancing the health of the nursing workforce on the night shift and promoting sleep-hygiene initiatives may have implications for decreased health care expenditures.

Background of the Study

Scholars have addressed the factors associated with an increased risk of weight gain among female nurses who work the night shift. Han, Trinkoff, Storr, Geiger-Brown, and Park (2012) and Amani and Gill (2013) reported that stress and lack of sleep during night shifts contributed to nurses' weight gain. Nurses who worked 12-hour night shifts suffered increased fatigue due to insufficient sleep (Han et al., 2012). Insufficient sleep, coupled with the abnormal eating habits of night shift nurses, led to weight gain (Buja et al., 2013). Nahm, Warren, Zhu, and Brown (2012) discovered that 53.8% of their participants missed meals from because of busy work schedules. In addition, 72.2% of

the respondents indicated that they felt they were not engaging in enough exercise (Nahm et al, 2012).

Weight gain among night shift nurses is measured by using body mass index (BMI), and being overweight is defined as having a BMI of 25 or greater (CDC, 2015). Huth, Eliadis, Handwork, Englehart, and Messenger (2012) revealed that 27.5% of the 97 night shift nurses they studied had a BMI of 30 or above. Huth et al. also found that night shift nurses' quality of sleep was lower than the sleep quality of day shift nurses. Additionally, Marqueze, Soares, Lorenzi-Filho, and Moreno (2012) revealed that working night shifts was associated with greater weight gain than working day shifts and that their participants had significant increases in their BMI compared to day shift nurses. According to Theorell-Haglöw, Berglund, Janson, and Lindberg (2013), both short and long sleeper night shift nurses were centrally obese and had greater neck circumference. Short sleepers were more centrally obese than the long sleepers were.

Problem Statement

The increasing numbers of overweight and obese nurses working night shifts are becoming the focus of occupational researchers. Researchers have conducted studies on weight gain among nurses from many countries. These countries include South Africa, Australia, the United Kingdom, New Zealand (Phiri, Draper, Lambert, & Kolbe-Alexander, 2014), Japan (Amani & Gill, 2013; Asaoka et al., 2013; Nagashima, Masutani, & Wakamura, 2014), the Republic of Korea (Jung & Lee, 2015), Malaysia (Coomarasamy, Wint, Neri, & Sukumanran, 2014), the United States (Buss, 2012; Han et al., 2012; Huth et al., 2013), Brazil (Marqueze et al., 2012), Taiwan (Lin et al. (2012), Europe (Saksrik-Lehouillierm, Bjorvatn, Hetland, Sandal, & Moen et at., 2012), and

Canada (Smith, Fritschi, Reid, & Mustard, 2012). Lozano-Kühne, Aguila, Manalang, Chua, Gabud, and Mendoza (2012) argued that because of the increase of business process outsourcing (BPO) in the Philippines, especially contact and call center work, research on shift work is becoming increasingly important. However, researchers have not focused on weight gain among female Filipino nurses working the night shift. Because norms about food and body weight vary from culture to culture (Hawkes et al., 2015), it is important to gain information on this cultural population concerning weight gain among night shift nurses.

Weight gain can lead to obesity. Obesity has become one of the most common health problems worldwide (Zimberg et al., 2012). Having a BMI of 25 or higher constitutes being overweight, and having a BMI of 30 or higher constitutes obesity (CDC, 2012; World Health Organization [WHO], 2015). The WHO (2015) reported that around 1.9 billion adults 18 years and older were overweight and that 600 million were obese. In the United States alone, 78.6 million are reported as being obese (CDC, 2015, 2014). Because of the prevalence of unhealthy weight gain in night shift nurses, researchers are focusing on the occupational-related weight gain associated with night shift work. For example, Asaoka et al. (2013) found connections between night shift work and weight gain among female night shift nurses in Japan. In Brazil, the problems of night shift nurses were poor sleep quality and reduced access to quality food choices (Marqueze et al., 2012). Working night shifts could also lead to unhealthy weight gain and weight-related medical conditions among female Filipino nurses. However, researchers have yet to focus on female Filipino nurses and night shift work as it relates to weight gain. In this quantitative study, I examined the connections between night shift

work and weight gain among female Filipino nurses working in community hospitals in the United States determine whether weight gain and night shift work are related in population.

Purpose of the Study

The purpose of this quantitative study was to gather information on whether insufficient sleep, abnormal eating patterns, stress, nursing units, working 12-hour shifts, age, marital status, number of years on night shift, and decreased physical activity are linked to weight gain among female Filipino nurses working the night shift in community hospitals in the United States. Scholars have shown high correlations between night shift work and weight gain (Asaoka et al., 2013). However, little is known about how the factors of night shift work relate to weight gain among female Filipino nurses. Night shift work includes factors such as insufficient sleep, poor sleep quality, poor eating habits, stress, 12-hour shift, and limited physical activity, which may all be related to weight gain among female Filipino night shift nurses (Asaoka et al., 2013; Lin et al., 2014). Marqueze et al. (2012) suggested that further studies are needed to investigate the relationships between short sleep durations of night shift nurses. Also, further investigation is required on the onset of related metabolic syndromes of weight gain, such as diabetes, hypertension, and high cholesterol levels. The purpose of this study was to explore the connections between the factors of night shift work—insufficient sleep, abnormal eating patterns, stress, nursing units, 12-hour shifts, age, marital status, number of years on night shift, decreased physical activity—and weight gain among female Filipino nurses.

Research Question and Hypotheses

Research Question 1: What statistically significant associations are there between insufficient sleep, abnormal eating patterns, and level of weight gain among female Filipino nurses working the night shift in the hospital?

H_01 : There are no statistically significant associations between insufficient sleep, abnormal eating patterns, and level of weight gain among female Filipino nurses working the night shift in the hospital.

H_a1 : There are statistically significant associations between insufficient sleep, abnormal eating patterns, and level of weight gain among female Filipino nurses working the night shift in the hospital.

Research Question 2: What statistically significant associations are there between working 12-hour shifts, number of years working on the night shift, and level of weight gain among female Filipino nurses working the night shift in the hospital?

H_02 : There are no statistically significant associations between working 12-hour shifts, number of years working on the night shift, and level of weight gain among female Filipino nurses working the night shift in the hospital.

H_a2 : There are statistically significant associations between working 12-hour shifts, number of years working on the night shift, and level of weight gain among female Filipino nurses working the night shift in the hospital.

Research Question 3: What statistically significant associations are there between age, marital status, and level of weight gain among female Filipino nurses working the night shift in the hospital?

H₀₃: There are no statistically significant associations between age, marital status, and level of weight gain among female Filipino nurses working the night shift in the hospital.

H_{a3}: There are statistically significant associations between age, marital status, and level of weight gain among female Filipino nurses working the night shift in the hospital.

Research Question 4: What statistically significant associations are there between stress, nursing units, decreased physical activity, and level of weight gain among female Filipino nurses working the night shift in the hospital?

H₀₄: There are no statistically significant associations between stress, nursing units, decreased physical activity, and level of weight gain among female Filipino nurses working the night shift in the hospital.

H_{a4}: There are statistically significant associations between stress, nursing units, decreased physical activity, and level of weight gain among female Filipino nurses working the night shift in the hospital.

Conceptual Framework

The conceptual framework for this quantitative study was the systems-oriented multilevel model developed by Huang et al. (2009). Huang et al. derived the concept of the model from socioeconomic theory, and the model stresses the importance of environmental and social factors related to human behavior in addressing and controlling for level of weight gain. This model involves multifaceted dimensions of human behavior, such as food choices, lifestyle, physical activity, culture, and socioeconomic factors (Huang et al., 2009). According to Huang et al.'s multidimensional model, weight

gain is a function of a combination of factors, including biology (individual metabolic processes), built environment (availability and marketing of foods), social environment (cultural attitudes toward food consumption and body weight), and economics (income and living standards).

Huang et al.'s (2009) model was adapted to the Institute of Medicine's (IOM) locate the evidence, evaluate the evidence, assemble the evidence, and inform decisions (LEAD) model to form the conceptual framework for this study. LEAD was developed by the IOM to use in a variety of complicated human health issues including weight gain (Chatterji, Green, & Kumanyika, 2014; Kumanyika, Brownson, & Cheadle 2012). This framework is used to address the complexities related to prevention of weight gain as well as other health problems, such as tobacco use and environmental health issues (Kumanyika et al., 2012). Such a multilevel framework is appropriate for addressing and accounting for biological, cultural, and institutional factors that may influence weight gain in Filipino night shift nurses. Such factors involved in the study include insufficient sleep, abnormal eating patterns, stress, nursing units, long 12-hour shift, age, marital status, number of years on night shift, and decreased physical activity.

Nature of the Study

In this study, I employed a quantitative, correlational, cross-sectional design, with data collection conducted via survey (See Appendix B). Correlational researchers assess the linear association between two or more variables in a nonexperimental study, and also determine the degree of relations between variables (Welford, Murphy, & Case, 2012). When using cross-sectional design, the data are collected at a single point in time

(Sedgwick, 2014). Surveys are the most common method of data collection in quantitative research.

The combination of Pearson and Spearman correlations were used to address the research questions. Correlations were used to examine the relationship between the characteristics of female Filipino nurses and weight gain. The significant variables were placed into a multiple linear regression to examine the predictive nature of these characteristics in the prevalence of weight gain.

Definitions

The following definitions were provided for use in the study.

Age factor: Only those between 30- to 62-years-old were used in the study to further classify the prevalence of weight gain among female Filipino nurses.

Body mass index (BMI): Level of weight gain was the primary dependent variable of the study, and BMI is used to classify the index of weight and height for being overweight (CDC, 2014; WHO, 2015). An individual described as being overweight has a BMI of 25 or greater (CDC, 2014; WHO, 2015). The estimated weight gain of participants in the study was about seven to 10 pounds for those who worked 10 years or less, and 11 to 15 pounds for those who worked more than 10 years. A healthy BMI for women is 18.5 to 24.9, and 25.0 to 29.9 kg/m² indicates being overweight (CDC, 2015).

Eating habits: Eating habits referred to night nurses' patterns of food consumption as a result of night shift work. Night shift nurses missed regular meals because they are sleeping during the day (Asaoka et al., 2013). In addition, nurses who slept less than the recommended 7 to 8 hours had a tendency to consume high caloric and

fatty foods to overcome lost meals (Griep et al, 2014; Nagashima et al., 2014). Long-term irregular meal patterns can contribute to weight gain (Spaeth et al., 2013).

Filipino nurses. Filipino nurses are foreign-educated nurses who met the required standards to practice nursing in the United States. Filipino nurses are the largest group of foreign-educated nurses who live in the United States (Chen, Auerback, Muench, Curry, & Bradley, 2013).

Insufficient sleep: Insufficient sleep referred to night shift nurses not getting the adequate 7 hours or more of sleep per 24-hour period recommended by Healthy People 2020 (Caruso, 2014).

Less physical movement: Individuals with less physical activity have a higher risk of gaining weight (McFadden, Jones, Shoemaker, Ashworth, & Swerdlow, 2014) compared to those who exercise regularly. Night shift nurses are more likely to be unable to perform physical exercise because they are overtired from work (Phiri et al., 2014). Also, night shift nurses with limited physical activity, coupled with increased food consumption, influences weight gain (Kim et al., 2015).

Long work hours: Nurses who provide direct patient care work 12-hour shifts. Working longer hours was directly related to increased BMIs (Lewis, Moscar, King, & Hogan, 2012). Nurses working on 12-hour night shifts have difficulty recuperating between shifts because of decreased hours of sleep, with increased complaints of tiredness and sleepiness (Han et al., 2012).

Marital status: A married person tends to gain weight because he or she is no longer interested in attracting a mate (Mata, Frank, & Hertwig, 2015). Moreover, married

people have an increased BMI compared to single persons as a result of marriage pressure (Mata et al., 2015).

Night shift: Night shift is a working schedule among health care professionals, transportation, manufacturing, and public services employees (Depner et al., 2014) that usually starts at 7:00 p. m. and ends at 7:30 a. m. Night shift is a working schedule outside the normal working hours. Night shift is part of nurses' schedule that provides 24-hour care to patients in the hospital, but nurses are working on different days of the week. Night shift is considered a risk factor for weight gain among nurses (Fisharaki, Kazemnyod, Zayeri, Rowzati, & Akbari, 2012; Maddox, 2013).

Number of years on night shift: Nurses preferred to work night shift because of family obligations, but may be unaware of the negative implications on their overall health. Extended duration of night shift work had strong association with weight gain, diabetes, and hypertension (Gu et al., 2015; Guo et al., 2013).

Nursing units: Community hospitals have varied nursing units. Nurses are experiencing different levels of stress in the different nursing units. In general, nursing profession is stressful because nurses deal with emergency situations (Najimi, Goudarzi, & Sharifirad, 2012). Dagget, Molla, and Belachew (2016) reported that nurses who worked in the ICU have highest stress level because patients are in life threatening situations. Other areas where nurses experienced high stress include OR, outpatient department, obstetric and gynecology, pediatrics, ER, and medical/surgical units (Dagget et al., 2016). Moreover, Boughattas et al (2014) found that nurses working in the ICU and ER have higher levels of stress compared to other nursing units in the hospital.

Stress: Stress refers to adverse emotional, physiological, and psychological tensions in individuals in response to stimuli (Han et al., 2012). Individuals are exposed to different level of stress in everyday life, but frequent exposure to high stress levels can negatively affect individuals' health (Amani & Gill, 2013).

Assumptions

It was assumed that female Filipino nurses who work night shift have the same risk of becoming overweight and obese as those of other cultures and races. However, this assumption cannot be demonstrated to be true because no research has been conducted on night shift work and weight gain among this population. In this quantitative study, it was assumed that the participants provided the most accurate information to the questionnaire. After participants were informed of the nature of the study, as well as of the confidentiality of the data collected, it was assumed that the participants answered truthfully and honestly so that the validity of the data is highly regarded for statistical analysis. The BMI of this population was calculated solely on participants' self-reported height and weight. It was assumed that BMI is a valid and accepted measurement for level of weight gain.

Scope and Delimitations

I focused on female Filipino nurses who were working the night shift in community hospitals in the United States. The demographic characteristics of the participants included age, marital status, education, and the number of years nurses have worked on the night shift. Because of the specifics of culture and ethnicity of female Filipino nurses, the findings of this study cannot be generalizable to other populations in

other settings. Further study is needed on this population to compare findings to studies on other populations.

Because the methodology of the study is cross-sectional using questionnaire surveys, causal links between other variables cannot be identified. The purpose of the study was to gather statistical data from female Filipino nurses who were continuously working on the night shift and occupational factors that lead to weight gain. Such factors included poor sleep quality, short sleep duration, stress, limited physical activity, and patterns of eating to compensate lost energy. Additionally, those who work less than 3 years on night shift, work per diem (once a week), familial history overweight, those with chronic medical conditions taking medications (such as steroids), and those in the supervisory or educator roles were excluded.

Limitations

One limitation was that participants' weight and height cannot be objectively measured to calculate their actual BMI measurement; the BMI of this population was based only on participants' self-reported height and weight. Consequently, the effects of social desirability bias may come into play. Social desirability bias refers to participants sometimes answering in ways that show them favorably to others rather than answering truthfully (Krumpal, 2013), especially in studies on topics that will be difficult for individuals to address, such as weight gain. Consequently, self-reported weight gain may be subject to social desirability bias.

Other limitations included self-reported hours of sleep duration, sleep quality, degree of physical activity, and food consumption to replenish their lost energy.

Probability sampling was another limitation in quantitative study because this type of

sampling does not reflect the larger population. In addition, there were other potential biases in the study. For example, I am a registered nurse who worked on the night shift and possible data manipulation can be a potential risk. In addition, because I focused on a cultural population and because cultural background can inform attitudes toward diet, consumption, food choices, and physical activity, findings from this study cannot be generalized to other populations.

Significance of the Study

Unhealthy weight gain is a health issue. This study may help nurses understand that night shift work is associated with many health concerns. These concerns include unhealthy weight gain, cardiovascular diseases, hypertension, premature death, and early disability (CDC, 2014). Although nurses possess adequate knowledge about health education, health promotion, and nutritional habits, they may not be aware that they are at risk for weight gain (Buss, 2012). Moreover, night shift nurses may be unaware of the detrimental effects of night shift work on their health (Chung, Kuo, Hsu, Chu, Chou, & Yang, 2012). Female Filipino nurses may also unknowingly run the risk of potential unhealthy weight gain. Information collected from this study may help to make nurses aware of the potential health risks associated night shift work.

Information collected from this study also has implications for theory and practice. Information on night shift work and weight gain among female Filipino nurses is lacking in the literature and is needed to identify potential health problems associated with night shift work and weight gain in this population. Information from this study may also have implications for practice and may lead to changes in policies and working conditions to promote the health and wellbeing of the nursing workforce. To achieve this

change, nursing leaders and health care administrators need information to initiate health promotion initiatives. These efforts might include better sleep hygiene for nurses to decrease the risk factors associated with working night shifts (Guo et al., 2013). Furthermore, information obtained from this study could lead to positive social change. First, the potential positive social change from this study includes providing information that might facilitate changes in policies and working conditions to promote the health and wellbeing of the nursing workforce. Second, the information from this study might help nurses better understand that night shift work can be associated with various health problems. Finally, information provided by this study might help to improve the health status of nurses that could decrease medical expenditures to the current health care system.

Summary

Night shift nurses have an increased risk of becoming overweight that could lead to obesity due to insufficient sleep, abnormal eating patterns, stress, working 12-hour shifts, age, number of years on night shift, and limited physical activity. Nurses possess adequate knowledge of health education, health promotion, and healthy living and eating habits. However, night shift nurses may be unaware of the impact of night shift work on their health. In epidemiological, laboratory, and cross-sectional studies, scholars have shown that working night shifts contributes to weight gain. As such, unhealthy weight gain while working night shifts have been identified among nurses in other cultures and races. However, no studies exist to determine if female Filipino nurses are vulnerable to weight gain while working night shifts. This quantitative study will help fill in this gap in the literature concerning the risk of weight gain in female Filipino nurses. The findings

from this quantitative study could lead to social change. Such social change include better understanding the effects of night shift work on nurses' health, improving nurses' health and working conditions, and preventing the development of related chronic medical conditions. These conditions include diabetes, hypertension, heart diseases, stroke, early disability, premature death, and some forms of cancer. In addition, improving the working conditions and health of the nursing workforce might lead to a decrease in weight-related medical expenditures, and help support the current healthcare system in the United States. Chapter 2 provides the literature search strategy and the theoretical foundation used in this study.

Chapter 2: Literature Review

Introduction

The purpose of this quantitative study was to gather information on whether insufficient sleep, abnormal eating patterns, stress, nursing units, working 12-hour shifts, age, marital status, number of years on night shift, and decreased physical activity are linked to weight gain among female Filipino nurses working the night shift in community hospital in the United States. There was statistical significance between night shift work and weight gain among nurses of different races and cultural backgrounds (Asaoka et al., 2013). Nevertheless, it is not well established how the factors of night shift work relate to weight gain among Filipino night shift nurses. Marqueze et al. (2012) recommended that further study was needed to support the relationship between short sleep duration among night nurses and the onset of metabolic syndromes, such as weight gain, diabetes, high blood pressure, and high cholesterol. This study may provide information that will contribute to the literature on the relationship between night shift work and weight gain among night shift nurses. In addition, this study will help fill the gap in research on night shift work and weight gain particular to female Filipino nurses. This chapter includes a literature search strategy, the theoretical foundation used for this study, and a review of the literature on the increased risk of weight gain among night shift female nurses.

Literature Search Strategy

The scholarly literature used for this literature review was accessed mainly through Walden University Library's online databases. The search engines used included the Cumulative Index to Nursing and Allied Health Literature (CINAHL), MEDLINE, PubMed, Health and Allied Complete, Ovid Nursing Journals, and Science Direct. In

addition, I used Google Scholar to find current, peer-reviewed literature and searched the WHO and CDC websites for relevant information on weight gain. The literature was accessed electronically in different formats, such as HTML and PDF formats. The key search terms and combinations of terms used included *weight gain, nurses, night shift, stress, extended work hours, and elevated BMI*. The electronic search of these scholarly journal articles and literature was also customized by publication date. Journal articles were sorted out by the published date from 2012, as the oldest, to 2016, as the most recent studies related to night shift work, nurses, and weight gain. One of the selected works in the literature review is a thesis, and another is a dissertation, which was also a poster presentation at the Council for the Advancement in Nursing Science 2010 in Washington, D. C.

Theoretical Foundation

There are many theoretical frameworks available for the study of the prevention of adult weight gain; however, the framework most appropriate for this study was a systems-oriented multilevel model developed by Huang et al. (2009). In 2008, Kaiser Permanente, in partnership with the CDC, asked the IOM committee to develop a framework to address the prevention of weight gain in the public (IOM, 2010). The system-oriented model LEAD (Figure 1) was developed by the IOM to use for a variety of complicated human health issues, including weight gain (Chatterji et al., 2014; Kumanyika et al., 2012). According to Huang et al., the model was developed based on the concept of socioeconomic theory, and the model stresses the importance of environmental and social factors related to individual behavior in addressing and controlling for weight gain. Additionally, the LEAD model approaches weight gain

through the multifaceted dimensions of individual behavior, and it includes considerations such as food choice, lifestyle, physical activity, cultural influences, and socioeconomic factors (Huang et al., 2009). This model has proven successful and effective in addressing other health problems involving the multifaceted dimensions of individual behavior, such as tobacco use and environmental health issues (Kumanyika et al., 2012).

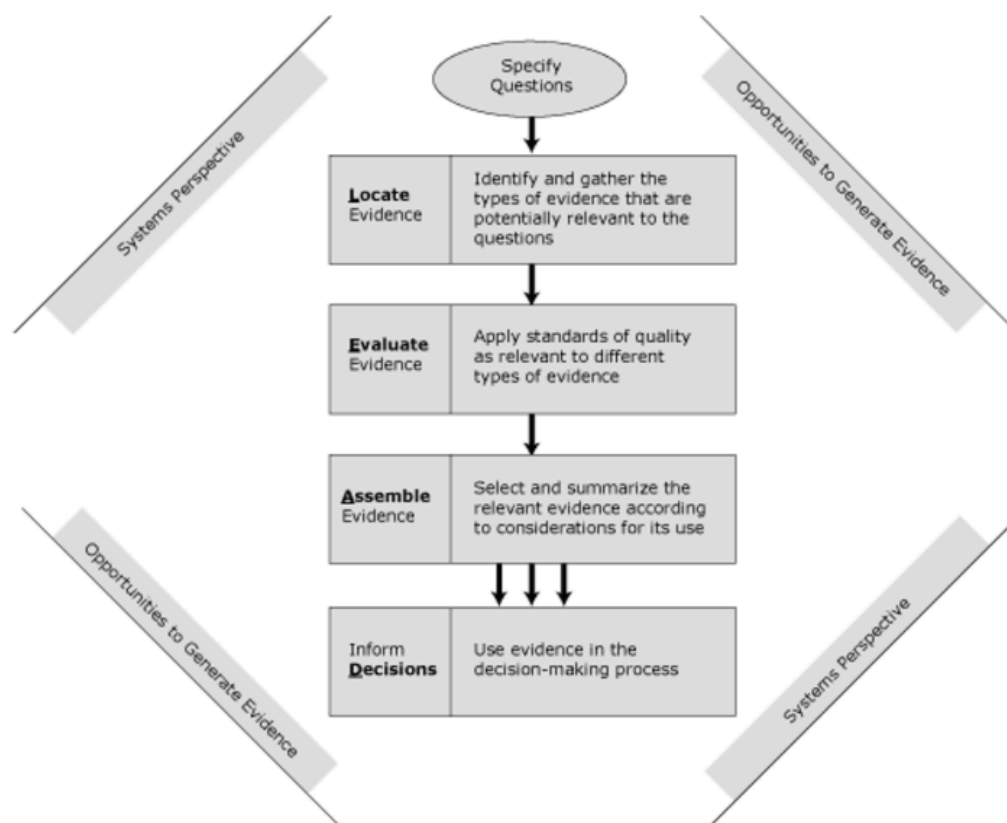


Figure 1. The LEAD framework for weight gain prevention decision making. Adapted from “L.E.A.D.: A Framework for Evidence Gathering and Use for the Prevention of Obesity and Other Complex Public Health Problems,” by M. Chatterji, L. W. Green, and S. Kumanyika, 2014, *Health Education and Behavior*, 41(1), p.87.

Unhealthy weight gain has been conceptualized as resulting from a combination of eating too much unhealthy food and low levels of physical activity (Huang et al., 2009). However, several factors may influence the amount of and type of food individuals eat, as well as their levels of physical activities (Huang et al., 2009). These factors include biology (individual metabolic processes, genetic influences), built environment (availability and marketing of foods), social environment (cultural attitudes toward food consumption and body weight), and economics (income and living standards; Huang et al., 2009). At the individual level, weight gain involves attitudes and behavior in personal lifestyle, unhealthy food choices, and lack of motivation (Chatterji et al., 2014). Environmental factors include working conditions, how food is processed and marketed, as well as education about food choices and dietary regimes (WHO, 2015). Genetic factors include predispositions to dietary illnesses and diseases, as well as familial influences and tendencies (Nahm et al., 2012). Because of the array of individual, biological, and social influences related to weight gain, scholars have not discovered a definitive way to manage being overweight, but there are preventive programs that can address level of weight gain (Chatterji et al., 2014).

Prevention and public health education are the keys to solving the unhealthy weight gain epidemic (Nahm et al., 2012). Because the causes of unhealthy weight gain are multifactorial, a system-wide approach is needed to study and address this phenomenon. Despite weight gain management used in the past, the rate of unhealthy weight gain continues to increase. The LEAD framework enables policymakers and practitioners to locate the evidence that could advise stakeholders to make decisions regarding the prevention and management of unhealthy weight gain (Chatterji et al.,

2014). LEAD provides a practical guide for the implementation of policies in the prevention and management of weight gain in community settings, as well as allowing for the collection of evidence to encourage policymakers and practitioners to understand weight gain as a complex health problem and make informed decisions to curb the unhealthy weight gain epidemic (Chatterji et al., 2014).

LEAD includes questions—a what, why, and how guide—in response to locating evidence, evaluating it, assembling it, and informing decision. The why assists decision makers with forming a judgment for taking action on weight gain issues at a geographical location. The what includes prevention programs or policies and an evaluation of the effectiveness of the programs or policies being implemented. The how depicts the implementation of the programs that may include resources, support, and the generalizability and transferability of the approach from one setting to the other (Kumanyika et al., 2012).

The LEAD framework has proved its efficacy in the management and prevention of weight gain through system-oriented decision making and policies. For instance, the prevalence of obesity among children and adolescents aged 2 to 19 years has decreased to 17% as the result of LEAD-based policies, compared to adult obesity rates of 38% (CDC, 2014). On policies, schools were encouraged not to serve cold cuts (high in sodium) and calorie-dense snacks. Rather, the school children should increase consumption of fruits and vegetables, replace sweet-sugary beverages with water, and increased physical activity. At the adult level, policymakers educated the public on nutritional facts of the processed food and encouraged the food processing companies to put nutritional labels on their products. Another result of LEAD-based policy is the cessation of the use trans fats

in restaurant food preparation that helps in the prevention of weight gain. Chatterji et al. (2014) posited that system-oriented frameworks, like LEAD, are effective because they involve considerations of culture, belief, behavior, and the law in health management.

Contributory Factors of Weight Gain among Night Shift Nurses

The causes of unhealthy weight gain in night shift nurses are multifactorial, and individual behavior, environmental factors, socioeconomic status, genetics, and illness play roles in unhealthy weight gain (Griep et al., 2014; Marqueze et al., 2012; McFadden et al., 2014). In this section of the literature review, I focus on the factors associated with unhealthy weight gain among female nurses working the night shift.

Insufficient Sleep

Sleep is an essential element of good health that helps promote brain functioning (Becuti & Pannain, 2014; CDC, 2014; Perry, Patil, & Presley-Cantrell, 2013) and plays a role in energy metabolism (Markwald et al., 2013). Insufficient sleep has been associated with long-term medical problems, such as diabetes, heart disease, and depression (CDC, 2014). In addition, the cumulative effect of insufficient sleep while continuously working night shifts can have negative impacts on nurses' health (Deori, 2012).

Insufficient sleep due to night shift work affects workers' health (Gu et al., 2015), and the WHO (2015) reported that night shift work could lead to cancer and other health problems. Gu et al. (2015) identified additional problems related to night shift work, including diabetes, high blood pressure, fatigue, sleep problems, and weight gain. Geiger-Brown, Rogers, Trinkoff, Kane, Bausell, and Shcarf (2012) found that insufficient sleep, fatigue, and poor sleep quality attributed to unhealthy weight gain among night nurses.

Geiger-Brown et al. reported that nurses usually slept fewer than 6 hours between shifts, meaning that night shift nurses may be sleep deprived.

Insufficient sleep promotes hunger and metabolic changes (Caruso, 2014). In addition, Markwald et al. (2013) discovered that the association between increased food consumption and insufficient sleep were reactions to the body's need for energy to stay awake at night. Becuti and Pannain (2014) found statistical significance between poor sleep and elevated BMI in women. Becuti and Pannain also observed less sleep and poor sleep quality were linked to the risk of weight gain.

Getting adequate sleep is a component of good health (McNeil, Doucet, & Chaput, 2013). Healthy People 2020 encouraged adults to get more than 7 hours of sleep per day to help promote health and prevent premature death (Caruso, 2014), and the National Institute of Health encouraged adults to sleep 7 to 8 hours per night (as cited in CDC, 2014). However, Filipino night shift nurses may not be getting the amount of sleep recommended to ensure good health and prevent weight gain.

Night Shift Work

Night shift work is becoming more common for workers in various industries, including health care, transportation, manufacturing, and public and consumer services (Depner et al., 2014; Gu et al., 2015). Night shift work refers to working anytime between the hours of 7:00 p. m. and 7:00 a. m., and it has been linked to risk factors leading to weight gain (Fisharaki, Kazemnyod, Zayeri, Rowzati, & Akbari, 2012). Because of the impact of night shift work on health, work-related weight gain has been studied (Peplonska et al., 2014), and there is a converging body of evidence that night

shift work is associated with a variety of health problems, including weight gain (Smith & Eastman, 2012).

Gu et al. (2015) found that women who worked the night shift for extended durations gained more weight and were more likely to develop diabetes, hypertension, or high cholesterol than day workers. Conversely, Fisharaki et al. (2012) found that night shift workers had lower BMI than day shift workers did; however, these findings do not align with the findings of other studies. Many researchers across the globe are interested in factors connected to work-related weight gain among nurses and in other fields.

Maddox (2013) reported that night shift is a risk factor for weight gain among nurses. Weight gain is one of the main problems related to the health of night shift nurses (Phiri et al., 2014). Huth et al. (2012) discovered that night shift work increased nurses' risk of having elevated BMI and being overweight compared to the general population. Kim et al. (2013) found that the prevalence of weight gain nurses working the night shift was 5.5% to 65.4%. Because of negative health consequences associated with night shift work among nurses, Asaoka et al. (2013) suggested reducing the amount of night shift work in order to prevent negative impacts on health for night shift nurses.

Job Stress and 12-Hour Shifts

Job stress and long working hours add to night shift nurses' likelihood of weight gain. Han et al. (2012) described nurses' job as stressful. Also, working long hours reduces quality and quantity of sleep and exposes nurses to more stress-promoting food consumption leading to weight gain. Additionally, nurses working 12-hour night shifts slept fewer than 6 hours between shifts, and they complained of fatigue and sleepiness (Han et al., 2012). Night shift nurses may be unaware of the negative impact of lack of

sleep on their health and their increased risk of heart problems and other metabolic syndromes, such as weight gain (Han et al., 2012).

Kim et al (2013) revealed that Korean nurses who worked long period a on the night shift have 1.63 (95% CI, 1.22-2.17) times tendency to be overweight than those who worked short duration. Quist et al. (2013) found that both male and female participants have increased BMI after 3 years. Furthermore, body weight changes occur within the period of 6 months to 1 year, and weight gain was more denoting among participants in the age group of 30 to 40 (Kwon, Park, Park, Choi, & Lim, 2016). Individuals who worked long hours on the night shift and slept less were more likely to have an increase in their BMI (Lewis et al., 2012). Jung and Lee (2015) discovered that night shift causes stress and fatigue on nurses that contributed to their sleep problems. Vijayalaxmi, George, and Nambier (2014) found that night shift workers have higher job stress levels as opposed to the day shift workers. Likewise, stressful working environments, such as those often found in night shift work, put strain on nurses' health (Phiri et al., 2014). Amani and Gill (2013) reported that long working hours, night shift, and stress have been associated with weight gain and higher BMI in nurses.

Compared to other types of work, the work of nurses includes long hours, and nurses are exposed to high level of stress. Boughattas et al. (2014) found that ICU and ER nurses have a heightened stress level compared to nurses in other hospital units. Caruso (2014) found that nurses working 12-hour shifts have a 28% increased risk of fatigue compared to those working 8- or 10-hour shifts and that working 12-hour shifts increased the likelihood of injuries and errors. In addition, Nahm et al. (2012) found that nurses

working 12-hour shifts ate their meals at irregular intervals, when compared to nurses working 8-hour shifts, and irregular meals had a negative impact on nurses' health.

Age and Duration of Night Work

As individuals age, the less sleep they need; however, long duration of insufficient sleep does have an impact on health. Kwon et al. (2016) revealed that weight gain was more pronounced among subjects between the ages of 30- to 40-years-old. Kim et al. (2013) found that the longer nurses worked the night shift, the greater their chances of becoming overweight and obese. Quist et al. (2013) found that both male and female Danish health care workers had increased BMI. In similar studies, extended duration of night shift work found to be connected to weight gain, diabetes, and high blood pressure (Gu et al., 2015; Guo et al., 2013).

Kim et al (2013) found that nurses who worked long-term night shifts were 1.63 times gained weight that those who worked short duration. Because of the body's tendency to adapt to a particular work schedule, nurses who work longer than four to five years of night shift are more at risk of developing metabolic syndromes (Letvak, Ruhm & Gupta, 2013), including Type 2 diabetes, hypertension, heart diseases, stroke, and some forms of cancer (CDC, 2014, 2015).

A people's metabolisms tend to slow, they tend to become heavier as they age. Letvak, Ruhm, and Gupta (2013) discovered that weight gain increased with age for nurses aged 50 and older; they were also found to have higher BMI than younger nurses. Also, Vimalananda et al. (2015) found that women below 50-years-old who worked night shift for ten years had a 39 percent chance of having diabetes than those who never worked the night shift. Boughattas et al. (2014) reported that nurses' ages influenced the

quality and duration of sleep, and Marqueze et al. (2012) found that nurses' ages and night shift work does contribute to weight gain.

Marital Status.

The marriage market suggests that a married person tends to gain weight because he or she is no longer interested in attracting a mate (Mata et al., 2015). Moreover, married people have an increased BMI compared to single persons as a result of marriage pressure (Mata et al., 2015).

Eating Habits.

Night shift nurses must often sleep during the daytime and, consequently, frequently miss their meals or eat them at irregular intervals. Griep et al. (2014) found in their study of 2,372 nurses that mostly women had elevated BMI due to irregular meals after working the night shift for extended periods of time. Sleep deprived nurses also tend to consume meals high calories and fats to help combat sleepiness (Griep et al., 2014; Nagashima et al., 2014). In addition, night shift nurse are often unable to maintain regular eating patterns (Amani & Gill, 2013). Moreover, a continued alteration in eating patterns contributed to weight gain (Spaeth et al., 2013) that consequently may lead to obesity (Asaoka et al., 2013). According to Depner et al. (2014), epidemiological studies have consistently showed that night shift work is linked to weight gain because insufficient sleep promotes food consumption. Conversely, Nagashima et al. (2014) argued that the linkage of irregular meals to weight gain has not been established. Also, Gallant, Lundgreen, and Draper (2012) argued that weight gain is not often related to night eating and sleep-related problems. Meanwhile, Phiri et al. (2014) found that poor dietary habits coupled with physical inactivity were the risk factors for weight gain among night shift

nurses. The accumulation of extra body weight over time consequently can lead to unhealthy weight gain not only among night shift workers, but the general population. The researchers' findings corroborated that unhealthy weight gain results from imbalances between food intake and inactivity for an extended period of time, and that the development of unhealthy weight gain is a long-term process that involves food choices and dietary habits.

Lack of Physical Activity

In comparison to nurses' night shift work, day shift work has more patient activity than night shift work. In contrast to the day shift, the night shift requires less physical exercise because patients are sleeping, but working the night shift is difficult because nurses need to stay awake. After night shift work, nurses are tired, sleepy, and have no energy to engage in any form of exercise. According to Kim et al. (2015), night shift nurses consumed more food to stay awake along with limited activities influenced weight gain. It has been emphasized that a poor dietary choices and less physical movements are the causes of gaining weight (McFadden et al., 2014). However, because fatigue is one of the major problems of night shift nurses (Huth et al., 2012), night shift nurses unable to maintain regular exercise are at risk of becoming overweight (Amani & Gill, 2013). In addition, nurses who are overtired from a stressful and long night's work are disinclined to exercise (Phiri et al., 2014). The CDC (2014) reported that physical activity improves health, but adults who do not engage in physical activity have a higher risk of health problems, including premature death, heart disease, stroke, Type-2 diabetes, depression, and some forms of cancer (CDC, 2014).

Obesity Trends in the United States

Preventing unhealthy weight gain is crucial because unhealthy weight gain can lead to obesity. Obesity ranked 5th in mortality worldwide with estimated deaths of 2.8 million per year (Giurgiu & Bardoc, 2013). In the United States, the numbers of obese adults were 78.6 million or 34.9 percent (CDC, 2015). Adult obesity in the United States for middle-aged individuals between the ages of 40 to 59 was 39.5 percent, for young adults age 20 to 39 was 30.3 percent, and for those above 60 was 35.4 percent (CDC, 2015). In comparison to the 50 states including the District of Columbia, no single state has less than 30 percent of individuals being overweight and less than 21 percent being obese (CDC, 2015). Alaska has the highest rate of overweight individuals represented by 37.7 percent, while Mississippi and West Virginia have the same rate of obesity represented by 35.1 percent (CDC, 2015).

Obesity Among Nurses

Obesity is the cumulative effect of energy imbalance, such as excessive food intake and decreased energy expenditures (Asaoka et al., 2013; Coomaransamy, Wint, Neri, & Sukumaran, 2014). It has been documented that obesity among nurses in different cultures and races is increasing, and obesity is becoming a public health issue. Researchers worldwide are compelled to focus their attention on work-related weight gain and obesity among nurses, particularly working the night shift. The impact of weight gain and obesity exacerbate health care costs across the globe (CDC, 2014; WHO, 2015).

Geiger-Brown et al. (2012) found almost 50 percent of the 80 female nurses in a critical care unit were overweight or obese. Findings of other studies indicated that 50.6 percent of 1,086 Malaysian nurses were overweight or obese, and the likelihood of

Nigerian nurses being overweight or obese was 62.6 percent (Coomarasamy et al., 2014). These research findings have shown that weight gain and obesity among nurses are prevalent worldwide. In the United States, Huth et al. (2012) conducted a descriptive quantitative, correlational study of 753 pediatric nurses and found that 97 of the 420 nurses had a BMI of 30 or greater, and 25.8 had a BMI greater than 30. In a cross-sectional study, Giurciu and Bordac (2013) showed 72.8 percent of men were overweight and 25 percent were obese, while 55.8 of women were overweight and 24.4 percent were obese.

In other industries, Jermendy, Nadas, Hegyi, Vasas, and Hidvegi (2012) found in their cross-sectional study of factory workers that female night shift workers had higher BMI than day workers did. Saksvik-Louilhier et al. (2012) found in their study that night shift workers had higher BMI compared to day shift workers. Conversely, most studies showed that night shift had higher BMI than day workers did. In their longitudinal study of steel factory workers, Fisharaki et al. (2012) found that night shift workers had lower BMI than day shift worker did. Many study results in other industries are conflicting regarding higher and lower BMI levels between night shift and day shift workers. According to Kim et al. (2013), the result of their cross-sectional study showed that nurses' BMI increased with extended exposure to night shift work.

The estimated weight gain of night shift nurses in the study is approximately seven to 10 pounds for nurses who worked 10 years or below, and 11 to 15 pounds for nurses who worked more than 10 years. Marqueze et al. (2012) reported in their study that 52.7 percent of participants had increased BMIs, with a 5.8 kilograms average increase among night shift workers. In addition, Griep et al. (2014) disclosed that for women who worked the night shift for 20 years, the average BMI was 25.6 kg/m², and

after 20 years it was 26.9 kg/m². A healthy BMI for women is 18.5 to 24.9, and 25.0 to 29.9 indicates being overweight (CDC, 2015). Moreover, according to Quist, Christensen, Christensen, Borg, and Bjorn (2013), after a three-year follow-up with study participants, men gained 0.25kg/m² and women gained 0.48 kg/m². The conflicting reports of different studies warrant further investigation into whether night shift work is connected to higher BMIs in Filipino night shift nurses.

Obesity Management and Prevention

Most studies on weight gain and obesity documented that the society has been trying to solve this chronic problem for almost 30 years. A decade ago, obesity rates increased and reached epidemic proportions (CDC, 2014). Today, there are plenty of infomercials trying to engage the public in any forms of physical activity to control weight gain and obesity. There are also different dietary managements on the market, and some pharmaceutical companies continue to discover drugs to help shed excess body weight. Some of the drugs available are FDA approved and some are not. Despite of all these available forms of weight management on the market, maintaining a healthy body weight can be a challenge (CDC, 2014).

Researchers have suggested ways to help improve the health of night shift nurses. According to Caruso (2014), Healthy People 2020 encouraged adults to get more than seven hours of sleep per day to promote health and prevent premature death from obesity. Markwald et al. (2013) offered public health initiatives including sleep education to avoid weight gain. Nurses need to engage in healthier behavior in order to improve their sleep quality (Geiger-Brown et al., 2012). According to Smith et al. (2012), one way to combat obesity in the workplace is through health promotion programs. Health promotion

programs could benefit the organizations through decreased employee absenteeism and reduced medical expenditures. In addition, nutrition program policies must be imposed in the community also at the local, state, and national levels. Imes and Burke (2014) advocated that policies must continue to focus on nutrition, dietary education, and promotion of physical mobility to reduce the prevalence of obesity in the United States and across the globe.

Because of the negative impact of night shift work on health, many scholars who studied this phenomenon found some solutions to improve the health of individuals who continue to work the night shift. Asaoka et al. (2013) suggested reducing the amount of night shift work for nurses. Another important step in obesity prevention is public education regarding the importance of sleep in the promotion of health. McNeil et al., (2013) and Perry et al., (2013) recommended adequate night sleep as a critical component of good health. Nurses need to recuperate and need to gain back the lost sleep, in quantity and quality, when working 12-hour-night shifts. Geiger-Brown et al. (2012) advocated that nurses maintain healthy work schedule and practice sleep hygiene by taking frequent breaks to overcome tiredness.

Obesity prevention at the organizational level is another initiative. Phiri et al., (2014) recommended a workplace program to support nurses in dealing with stress and improve working environments in order to facilitate the healthy lifestyle of nurses. This can be achieved by providing healthier food choices in hospital cafeterias. To support these suggestions, organizational policy and program planning should be a priority to improve the health of the nursing workforce (Coomarasamy et al., 2014). Furthermore, nursing leaders, managers, and healthcare administrators must employ policies in the

workplace allowing frequent breaks to reduce the risk of fatigue (Caruso, 2014). In the event that night shift workers have chronic sleep problems that truly impact their health, the use of prescription medication might be necessary to help them sleep. Smith and Eastman (2012) suggested that the best way to fight fatigue and sleepiness while working the night shift was to maintain circadian rhythm through the use of melatonin, hypnotics, and sedatives.

Summary

Adult weight gain is a major health problem that has reached epidemic proportions. Weight gain in the workplace have become a public concern and compelled researchers to investigate the association of night shift work to BMI. In the field of healthcare, weight gain continues to increase, especially among nurses who are continuously working the night shift. Epidemiological, cross-sectional, longitudinal, and laboratory studies, as well as systematic reviews of literature, have shown that night shift work has been associated with weight gain among nurses in different races, cultures, and ethnicity, but the likelihood of weight gain among night shift female Filipino nurses has yet to be examined. Although, studies have shown that night shift workers had higher BMI than day shift workers did, the exact cause of this phenomenon has not been well established. This quantitative study gathered information on whether insufficient sleep, abnormal eating patterns, stress, nursing units, working 12-hour shift, age, marital status, number of years on night shift, and decreased physical activity are linked to weight gain among female Filipino nurses working the night shift in community hospitals in the United States. Information from this study will help fill the gap in research literature regarding the prevalence of weight gain among female Filipino night shift nurses.

Chapter 3 provides the methodology used in this study to explore factors that may be linked to weight gain among female Filipino night shift nurses.

Chapter 3: Research Method

Introduction

In this chapter, I will outline the study's methodology design and approach. The population of interest and sampling procedures will be identified. In addition, I will describe the data collection procedures, instrumentation, operationalization of variables, and data analysis plan to answer the research questions. I will present my perspective in examining the possible causes of weight gain amongst night shift female Filipino nurses.

Purpose of the Study

The purpose of this quantitative study was to gather information on whether insufficient sleep, abnormal eating patterns, stress, working 12-hour shifts, age, number of years on night shift, and decreased physical activity are linked to weight gain among female Filipino nurses working the night shift in community hospitals in the United States. Further study was needed to better understand what might cause weight gain in adults. It may be feasible to create a more efficient prevention and management programs to counteract the trend of weight gain in the United States and across the globe (Kumanyika et al., 2012). In addition, the information found in the study could help night shift nurses understand better the implications of night shift work; improve their health status; and avoid the development of chronic health problems, such as diabetes, heart disease, hypertension, stroke, and premature death (CDC, 2015, 2014).

Research Design and Methodology

Variables

The independent variables of this study corresponded to physical and biological characteristics of female Filipino nurses. The independent variables included insufficient

sleep, abnormal eating patterns, stress, nursing units, work 12-hour shifts, age, marital status, number of years on night shift, and less physical activity. Quist et al. (2013) found increased BMI among male and female study subjects. According to Kwon et al. (2016), night shift induced weight change among female participants between the aged of 30 to 40. The dependent variable for this study corresponded to level of weight gain, as measured by BMI (CDC, 2015, 2014; NIH, 2012; WHO, 2015). The demographic characteristics included age, gender, marital status, and education.

Research Design

Research designs are procedures and plans for studies that include the methods of data collection and analyses (Grove, Burns, & Gray, 2013). I used a quantitative methodology, with a correlational, cross-sectional, survey approach. Quantitative methodologies are systematic investigations of a problem that can be measured using numerical or statistical data (Watson, 2015). The key dependent variable for this research was BMI, which is a numerical measurement. Correlational researchers assess the linear association between two or more variables in nonexperimental studies and determine the degree of relations between two variables (Welford et al., 2012). Cross-sectional approaches are used when the data are collected at one point in time that often involves questionnaire survey (Sedgwick, 2015). An experimental or quasi-experimental approach would not be suitable for this research because observations were not randomly assigned to treatment and control groups, and there was not an intervention being conducted. An online survey approach is appropriate when the variable measurements of interest obtained through participants' self-reported responses are fast and cost effective for data processing (Zhang, Kuchenke, Would, Velten, & Margraf, 2017). The responses obtained

from the survey were helpful in describing the statistics and trends in Filipino nurse weight gain.

Population

The population of this study was female Filipino nurses who were working during the night shift as a registered nurse in community hospitals in the United States. The characteristics of the target population included women working 75.0 hours per pay period (2 weeks) for full time and or 37.5 hours per pay period for part time, working 3 or more years as a nurse, aged 30- to 62-years-old, and Philippines-educated nurses who met the requirements to practice in the United States.

Sample Procedure

The sample for the study consisted of a group of female Filipino nurses working the night shift. Convenience sampling was the type of sampling used for the recruiting process. Convenience sampling refers to the selection of participants due to their proximity and accessibility to the researcher (Etikan, Musa, & Alkassim, 2016). The sample used in this study was based on the data collected from female Filipino nurses. The inclusion criteria for the study were female Filipino nurses who were working the night shift as a registered nurse. Participants were excluded based on the following criteria: male Filipino nurses working as registered nurses, those who were younger than 30-years-old or older than 62-years-old, had gestational weight gain before starting work as a registered nurse, or were overweight prior to working as a nurse. Additionally, those who worked fewer than 3 years on night shift, worked per diem (once a week), had familial history of overweight, those with chronic medical conditions taking medications (such as steroids), and those in the supervisory or educator roles were also excluded.

Power Analysis

When conducting research involving statistical analyses, it is necessary to recruit a sufficient sample size to validate the statistical findings. I used correlations with multiple linear regression. A conventional power of .80 and an alpha level of .05 will ensure a 95% statistical certainty that the findings did not occur by chance alone (Oakes, 2007).

For the multiple linear regression, a medium effect size was used, $f^2 = .15$. A total of nine predictor variables were entered into the model. Applying the above parameters to G*Power 3.1.7 statistical software, it was determined that a sample size of 98 participants would be sufficient for the multiple linear regression (Faul, Erdfelder, Buchner, & Lang, 2014). Assuming a 20% return rate on the surveys, I invited 500 nurses for participation in the study. In the event that I was unable to meet the minimum requirements of participants, I would reach out to another institution and extend the data collection process. Hardigan, Succer, and Fleisher (2012) suggested that if no response is received after 2 weeks, a follow-up e-mail is necessary and, after 1 week, a final reminder should be sent to yield a 99% responses on a web-based survey. According to Keusch (2012), multiple contact strategies to participants increases response rates, such as follow-up calls, sending a short message reminder, and text messages.

Procedure for Recruitment, Participation, and Data Collection

Recruitment and Participation

I recruited participants through an invitation letter sent through e-mails. Participants' names, home addresses, and e-mails were obtained through the hospital's human resources record (see Appendix A). The invitation letter was e-mailed to the

participants and explained the purpose and goals of the research. The survey was conducted in New York-Presbyterian/Queens Hospital in Flushing, New York. The survey questionnaire was linked to Survey Monkey, and the instructions to the link were provided. Participants were advised to answer the survey questionnaire and provide the best possible or honest answers to the questions. Participants were informed that they can stop or may refuse to answer any questions at any time.

Data Collection

The data collection process represents the recipe format for sampling and administering surveys to participants (Grove et al., 2013). Data were collected from a researcher-created survey tool based on literature review that was administered to prospective participants. Prior to completing the survey, the participants were required to provide consent for their involvement. In the survey, I asked participants to indicate their levels of sleep, stress, work hours, and eating habits. The Likert-scaled responses to these items were used as the independent variables or predictors in the study. In the survey, I also recorded participants' height and weight, which were used for the calculation of BMI. BMI was treated as the dependent and criterion variable for the research questions. Two previously validated survey instruments were used in the study: the Pittsburg Sleep Quality Index (PSQI) and the Perceived Stress Scale (PSS-14). The data used in this study were in compliance with the requirements for the use of human subjects of the Institutional Review Board (IRB) of Walden University. The IRB approval number was 03-06-17-0173570, and it was obtained prior to any data collection.

Pittsburg Sleep Quality Index

The PSQI contains 19 self-rated questions regarding sleep quality. Sample questions include “During the past month, when have you usually gone to bed at night?” and “During the past month, when have you usually gotten up in the morning? A combination of free response and multiple choice items were used. The PSQI generates seven scores that correspond to subjective sleep quality, sleep latency, sleep duration, habitual sleep efficiency, sleep disturbances, use of sleep medications, and daytime dysfunction. Combining the factors together generates a global score, ranging from 0-21. A PSQI global score greater than 5 is typically considered to be evidence for significant sleep disturbance. The PSQI has previously demonstrated acceptable reliability for the overall scale, $\alpha = .83$ (Buysse, Reynolds, Monk, Berman, & Kupfer, 1989).

Perceived Stress Scale

The PSS-14 contains 14 self-rated survey items regarding stress (see Appendix C). Sample items include “In the last month, how often have you been upset because of something that happened unexpectedly?” and “In the last month, how often have you felt nervous and “stressed? “ The PSS-14 scores were obtained by a sum of all 14 items. Seven items were reverse scored prior to calculating the composite scores. Total scores can range between 0-56. The PSS-14 has previously shown an acceptable level of reliability, $\alpha = .78$ (Cohen, Kamarck, & Mermelstein, 1983).

Operationalization of Constructs

Dependent Variable

Level of weight gain was the primary dependent variable of the study. Being overweight is classified as having a BMI of 25 or greater (CDC, 2014; NIH, 2012; WHO, 2015). BMI was calculated based on the participants’ self-reported height and weight.

Participants were asked “How tall are you without shoes?” (CDC, 2013). Responses were provided in feet and inches. Participants were also asked, “How much do you weigh without shoes?” (CDC, 2013). Responses were recorded in pounds.

Independent Variables

The principal independent variables of this study were insufficient sleep, abnormal eating patterns, stress, nursing units, working 12-hour shifts, age, marital status, number of years on night shift, and less physical activity.

Night shift.

Night shift is a working schedule outside the normal working hours. The night shift is part of nurses’ schedule that provides 24-hour care to patients in the hospital. The night shift is considered a risk factor for weight gain among nurses (Fisharaki et al., 2012; Maddox, 2013;). Nurses who continue to work night shifts increase their risk of weight gain and elevated BMI (Huth et al., 2012).

Insufficient sleep.

Night shift nurses are reportedly not getting adequate sleep between shifts. According to Geiger-Brown et al. (2012), night shift nurses slept fewer than 6 hours between shifts. An insufficient sleep promotes hunger and metabolic changes (Caruso, 2014) that lead to weight gain, among other medical problems, such as diabetes, heart disease, high blood pressure, and depression (CDC, 2014). Adequate sleep can be defined as 7 hours or more per 24-hour period (Caruso, 2014). The PSQI was used to generate a continuous measurement for sleep quality index, with values from 0-21.

Eating habits

Night shift nurses usually missed their normal meals because they slept during the day (Asaoka et al., 2013). Nurses who sleep less than the recommended 7 to 8 hours of sleep have the tendency to consumed high caloric and fatty foods to overcome lost meals (Griep et al., 2014; Nagashima et al., 2014). Night shift nurses miss their regular meals because of busy work (Amani & Gill, 2013). Long-term irregular meal patterns contribute to weight gain (Spaeth et al., 2013).

Stress

People are exposed to different level of stress in everyday life, but frequent exposure to high level of stress has a negative impact on health. Nurses are constantly dealing with a highly stressful environment (Han et al., 2012), which is another factor that contribute to nurses' stress in the night shift work (Phiri et al., 2014). Stress has been associated with weight gain and higher BMI among night shift nurses (Amani & Gill, 2013). To measure stress, the PSS-14 was used to generate a continuous measurement for stress, with values ranging from 0-56.

Nursing units

Community hospitals have varied nursing units. Nurses are experiencing different levels of stress in different nursing units. In general, the nursing profession is stressful because nurses deal with emergency situations (Najimi et al., 2012). Dagget et al. (2016) reported that nurses who worked in the ICU have highest stress level because patients are in life threatening situations. Other areas that nurses experienced high stress include OR, outpatient department, obstetric and gynecology, pediatrics, ER, and medical/surgical units (Dagget et al., 2016). Moreover, Boughattas et al. (2014) found that nurses working

in the ICU and ER have higher levels of stress compared to other nursing units in the hospital.

Long work hours

Nurses who provide direct patient care work 12-hour shifts. Working longer hours is directly related to increased BMIs (Lewis et al., 2012). Nurses working on 12-hour night shifts have difficulty recuperating between shifts because of decreased hours of sleep, with increased complaints of tiredness and sleepiness (Han et al., 2012).

Less physical movements

Individual with less physical activity have a higher risk of gaining weight (McFadden et al., 2014) compared to those who exercise regularly. Night shift nurses are more likely to be unable to perform physical exercise because they are overtired from work (Phiri et al., 2014). Also, night shift nurses with limited physical activity, coupled with increased food consumption, are more likely to gain weight (Kim et al., 2015). Physical activity was measured based on the participant's response on the time spent in exercising.

Age factor

Only those between 30- to 62-years-old were included in the study to further classify the prevalence of weight gain among female Filipino nurses. Vimalananda et al. (2015) discovered that women below 50-years-old who worked during night shifts for 10 years had a 39% higher chance of having diabetes than those who never worked the night shift. In addition, Letvak et al. (2013) found that weight gain increased with age for nurses aged 50 and older, and they were also found to have higher BMI than younger

nurses. Participants were asked in the survey questionnaire “ How old are you?”

Responses were recorded in numerical form.

Marital status

A married person tends to gain weight because he or she is no longer interested in attracting a mate (Mata et al., 2015). Moreover, married people have an increased BMI compared to single persons as a result of marriage pressure (Mata et al., 2015).

Number of years on night shift

Nurses preferred to work night shift because of family obligations, but may be unaware of the negative implications on their overall health. Kim et al. (2013) discovered that Korean nurses who worked long term on night shift had 1.63 times tendency to be overweight than those who worked night shift of short duration. Extended duration of night shift work had an association with weight gain, diabetes, and hypertension (Gu et al., 2015; Guo et al., 2013).

Gender

The participants in this study were female nurses only. Geiger-Brown et al. (2012) found that almost 50% of the 80 female nurses in a critical care unit were overweight or obese. Jermendy et al. (2012) found that female night shift workers had higher BMI than day workers did.

Race/ethnicity

The race/ethnicity of the participants was Asian. This was important because the prevalence of weight gain among this ethnicity was compared to other races/ethnicities. There is a statistically significant relationship between working during the night shift and weight gain among nurses of different cultural backgrounds and ethnicities (Asaoka et al.,

2013). However, it is not clear how the factors of night shift work are associated to weight gain among Filipino night shift nurses.

Data Analysis Plan

Raw data from the survey responses were entered into SPSS version 24.0 for Windows. Frequencies and percentages were examined for the nominal variables of interest such as gender. Descriptive statistics was used to examine the means and standard deviations of continuous variables. Bar charts and histograms were used to visually examine the trends in the data. Data were examined for outliers by calculation of standardized values, or *z*-scores.

Research Questions and Hypotheses

Research Question 1: What statistically significant associations are there between insufficient sleep, abnormal eating patterns, and level of weight gain among female Filipino nurses working the night shift in the hospital?

H₀1: There are no statistically significant associations between insufficient sleep, abnormal eating patterns, and level of weight gain among female Filipino nurses working the night shift in the hospital.

H_a1: There are statistically significant associations between insufficient sleep, abnormal eating patterns, and level of weight gain among female Filipino nurses working the night shift in the hospital.

Research Question 2: What statistically significant associations are there between working 12-hour shifts, number of years working on the night shift, and level of weight gain among female Filipino nurses working the night shift in the hospital?

H_02 : There are no statistically significant associations between working 12-hour shifts, number of years working on the night shift, and level of weight gain among female Filipino nurses working the night shift in the hospital.

H_a2 : There are statistically significant associations between working 12-hour shifts, number of years working on the night shift, and level of weight gain among female Filipino nurses working the night shift in the hospital.

Research Question 3: What statistically significant associations are there between age, marital status, and level of weight gain among female Filipino nurses working the night shift in the hospital?

H_03 : There are no statistically significant associations between age, marital status, and level of weight gain among female Filipino nurses working the night shift in the hospital.

H_a3 : There are statistically significant associations between age, marital status, and level of weight gain among female Filipino nurses working the night shift in the hospital.

Research Question 4: What statistically significant associations are there between stress, nursing units, decreased physical activity, and level of weight gain among female Filipino nurses working the night shift in the hospital?

H_04 : There are no statistically significant associations between stress, nursing units, decreased physical activity, and level of weight gain among female Filipino nurses working the night shift in the hospital.

H_{a4} : There are statistically significant associations between stress, nursing units, decreased physical activity, and level of weight gain among female Filipino nurses working the night shift in the hospital.

To address the research questions, a combination of Pearson and Spearman correlations were conducted to examine the associations between the characteristics of female Filipino nurses and level of weight gain. Pearson correlations are appropriate statistical analyses when the goal of the research is to measure linear relationship between two variables (Rebekić, Lončrić, Petronvić, & Marić, 2015). Spearman correlations are used to assess the strength of association between two variables when at least one of the variables is measured on an ordinal scale (Rebekić et al., 2015). Prior to analysis, the assumption of linearity was assessed. Each correlation will have a coefficient value and an associated p -value. P -values less than .05 will indicate the presence of a significant relationship. Cohen's standard will be used when interpreting the strength of correlation coefficients. Correlation coefficients between .10 and .29 represent a small association; values between .30 and .49 represent a medium association; and values above .50 represent a large association (Cohen, 1992).

The significant variables in the correlations were entered into a multiple linear regression analysis. A multiple linear regression is an appropriate statistical analysis when the goal of the research is to assess the predictive relationship between a set of predictors and a continuous criterion variable (Nimon & Oswald, 2013). The criterion variable corresponded to BMI. Prior to conducting the multiple linear-regression, the assumptions of absence of multicollinearity, normality, and homoscedasticity will be assessed by examination of scatterplots.

The multiple linear-regression used the F test to evaluate the collective effect of the predictors on the criterion variable. If the overall regression model is significant, individual t tests will be conducted on each predictor value to assess the strength of each predictor. P -values less than .05 will suggest the presence of a significant relationship and the null hypothesis will be rejected in favor of the alternative hypothesis.

Threats to Validity

Threats to external validity correspond to areas of the sample that provide bias in regards to the interpretation of the findings (Haegele & Hodge, 2015). I used sample from Filipino nurses in the hope that the findings of the statistical analyses can be linked to the greater population. However, extreme caution was used in the interpretation of these findings and it will not be assumed that the statistical findings can be perfectly generalized to the population of interest.

Threats to internal validity correspond to potential limitations existing in the situational specifics of the research design and data collection steps. First, there may be several confounding variables that explain the relationship between the variables of interest. The researcher acknowledged the potential effect that these confounding variables are having on the statistical findings. In addition, the selection of a quantitative methodology has potential limitations. While quantitative methodologies can statistically examine research questions, these studies are unable to accurately assess the underlying experiences and perceptions of subjects.

Ethical Considerations

Researchers have an ethical responsibility to inform and protect all participants involved in the study. Any possible ethical conflicts were avoided by carefully planning

all components of the study. I followed the moral and ethical guidelines identified by federal regulations and the Institutional Review Board (IRB) of Walden University. Prior to administering surveys to the participants, the IRB approved all steps of data collection. The identity of participants was protected and their anonymity remained confidential. All information inputted to SPSS was handled personally and was protected through encrypted password in my laptop computer. The safeguard measure for data storage is a locked file within my residence, where the data will be securely maintained for a period of five years after the research is completed. Following the expiration of the five-year retention period, all research-related data will be permanently deleted.

Summary

The purpose of this quantitative study was to explore the relationship between insufficient sleep, abnormal eating patterns, stress, nursing units, working 12-hour shifts, age, marital status, number of years on night shift, less physical activity, and the level of weight gain among female Filipino nurses working the night shift in community hospitals in the United States. This chapter of the study identified and justified the selection of a quantitative methodology with cross-sectional and correlational design. The researcher created a survey instrument to record the various factors that could be influencing weight gain among female Filipino nurses. The data analyses to address the research questions consisted of Pearson correlations and a multiple linear regression. The chapter concluded with threats to validity and ethical considerations. The details of the study result were disclosed in Chapter 4.

Chapter 4: Data Collection and Analysis

Introduction

The purpose of this quantitative, cross-sectional study was to gather information on whether insufficient sleep, abnormal eating patterns, stress, nursing units, working 12-hour shifts, age, marital status, number of years on night shift, and decreased physical activity are linked to weight gain among female Filipino nurses working the night shift in community hospitals in the United States. In this chapter, I will describe the characteristics of the study's participants, the steps assumed in data collection and analysis, the findings of the study, the outcomes related to research questions and hypotheses, and the summary. Data were first examined using descriptive statistics via frequencies, percentages, means, and standard deviations. To address the research questions, a combination of Spearman correlations, ANOVAs, and multiple linear regression were conducted. Statistical significance was evaluated at the conventional level for all inferential analysis, $\alpha=.05$.

Data Collection

The study was both approved by the IRB of Walden University and the New York-Presbyterian Hospital/Queens Hospital. Data were collected through the Internet via Survey Monkey™ from March 27, 2017 to April 15, 2017. Initially, there were 115 female Filipino registered nurses recruited to participate in the study who were conveniently selected from the records in the nursing office of New York-Presbyterian/Queens Hospital. Upon evaluation for inclusion in the study, 17 registered nurses were excluded, two were on medical leave, four were on orientation, and 11 were employed less than 3 years and they were younger than 30-years-old. Invitations were

sent to 98 eligible participants through their respective hospital e-mails on March 20, 2017. Data were collected from 75 participants' responses. Prior to analysis, the data were screened for missing cases and outliers. There were a total of seven removals made due to participants not answering completely to a majority of the questionnaire's items. Outliers were examined by calculation of standardized values, or z-scores. Z-scores falling outside the range ± 3.29 standard deviations away from the mean were considered outliers. One case was subsequently removed for an outlying response. After reductions, the data were analyzed from the complete responses of 67 participants.

In the data collection plan described in Chapter 3, I stated I was going to invite 500 registered nurses in three different hospitals. This number of nurses was not reached because the study was conducted only in one hospital. To this effect, I requested a letter of cooperation from two hospitals, but one denied my request and the other one did not respond to my request at all. Due to the minimum sample size requirement not being reached through a priori power analysis, the statistical findings must be interpreted with a level of caution because of the lack of power (Williams & Bornmann, 2016).

Data Analysis

Survey responses were imported and analyzed using SPSS version 24.0 for Windows. Descriptive statistics were used to examine the continuous variables of the study. Continuous variables were presented as means and standard deviations, and bar charts and histograms were used to visually examine the trends in the data.

Demographic Characteristics of Participants

Descriptive statistics for demographic data were collected, such as age, marital status, and level of education. Age was subgrouped into 30 to 34, 35 to 40, 41 to 45, 46 to

50, 51 to 55, and 55 and over. Marital status was described as single, married, divorced, separated, and widower. Educational levels were subcategorized into associate degree or diploma in nursing, BSN, MSN/MS, and PhD/DNP or other doctoral level. The ethnicity was Asian.

Results

Frequencies and Percentages

Frequencies and percentages were examined for the nominal and ordinal level variables. Age 30- to 34-years-old represented the most among the participants ($n=14$, 21%) followed by age 46- to 50-years-old ($n=13$, 19%). A majority of participants were married ($n = 50$, 75%). A majority of the samples were employed full time ($n = 61$, 91%) and had a BSN ($n = 55$, 82%). Most of the participants worked night shift ($n = 63$, 94%) and had shifts extending 12 hours ($n = 62$, 93%). Most of the participants worked in the critical care units ($n = 24$, 36%) or medical surgical units ($n = 29$, 43%). A majority of the participants previously worked the night shift before transferring to the day shift ($n = 45$, 67%). Frequencies and percentages are presented in Table 1.

Table 1

Frequency Table for Nominal Variables

Variable	n	%
Age		
30 to 34 years old	14	21
35 to 40 years old	9	13
41 to 45 years old	10	15
46 to 50 years old	13	19
51 to 55 years old	9	13
Over 55 years old	12	18
Marital Status		
Divorced	4	6
Married	50	75
Single	11	16
Widow	2	3
Employment Status		
Full time (75.0 hours per 2 weeks pay period)	61	91
Part time (37.5 hours per 2 weeks pay period)	6	9
Nursing Education		
Associate Degree in Nursing or Diploma in Nursing	4	6
BSN	55	82
MSN/MS	8	12
Work Night Shift		
No	4	6
Yes	63	94
Shift Extend to 12 Hours		
No	5	7
Yes	62	93
Specialty Unit		
Critical Care Units (ICU, CCU, ER, CVRU)	24	36
Labor and Delivery Unit (Mother/Baby)	4	6
Medical-Surgical Unit	29	43
Operating Room/Recovery Room/Cardiac Catheterization Laboratory	2	3
Telemetry Unit	8	12
Worked Night Before Changing into Day Shift		
Never	4	6
No	18	27
Yes	45	67

Length of Working Current Shift		
3 to 5 years	20	30
6 to 10 years	9	13
11 to 15 years	11	16
16 to 20 years	11	16
21 to 35 years	16	24
Hours of Sleep		
3 hours or less	4	6
4 hours	20	30
5 hours	28	42
6 hours	11	16
7 hours and above	4	6
Sleep Quality		
Poor	15	22
Fair	33	49
Good	18	27
Very good	1	1
Miss Meal		
Breakfast	11	16
Dinner	33	49
Lunch	16	24
Snack	7	10
Miss Meal		
Always/all the time	10	15
Most of the time	25	37
Sometimes	30	45
Not at all	2	3
Physical Activity		
High	1	1
Low	23	34
Moderate	43	64
Exercise After Work		
Never	12	18
Once a week	2	3
Sometimes	39	58
Twice a week	10	15
Thrice a week	4	6

Descriptive statistics were examined for the continuous level variables. Global PSQI scores ranged from 1.00 to 12.00 with $M = 4.42$ and $SD = 2.22$. As evidenced by Figure 1, Global PSQI scores were slightly skewed to the right. Perceived stress scores ranged from 8.00 to 33.00 with $M = 23.07$ and $SD = 5.51$. As evidenced by Figure 2, perceived stress scores were slightly skewed to the left. BMI values ranged from 18.20 to 32.89 with $M = 25.18$ and $SD = 2.91$. As evidenced by Figure 3, BMI values were approximately normal in distribution. Table 2 presents the findings of the descriptive statistics.

Table 2

Descriptive Statistics of Continuous Variables

<i>Continuous Variables</i>	<i>Min.</i>	<i>Max.</i>	<i>M</i>	<i>SD</i>
Global PSQI	1.00	12.00	4.42	2.22
Perceived Stress Scale	8.00	33.00	23.07	5.51
BMI	18.20	32.89	25.18	2.91

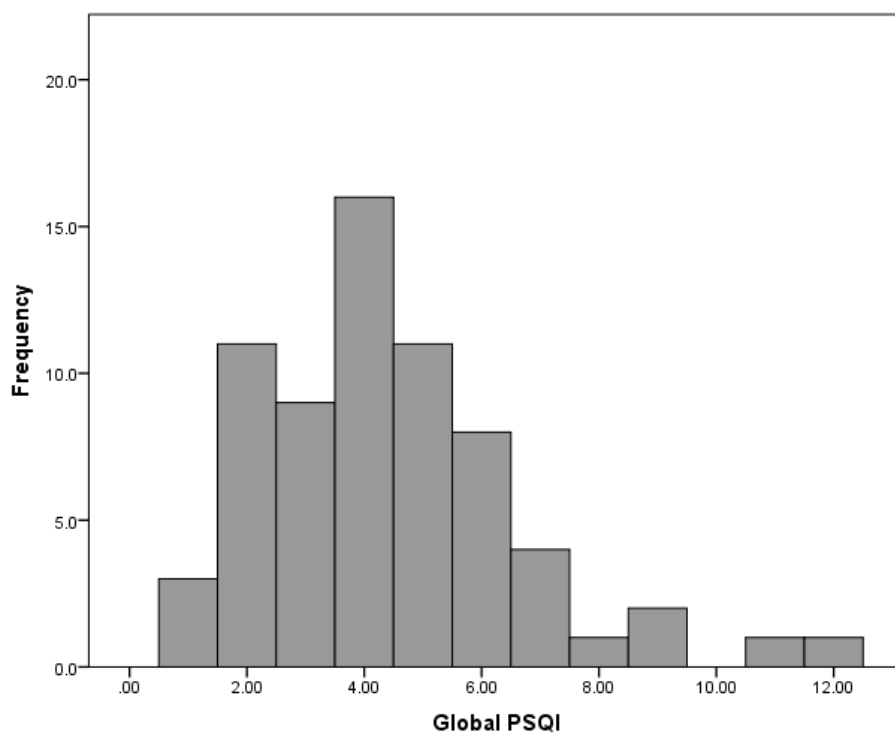


Figure 1. Distribution of global PSQI scores.

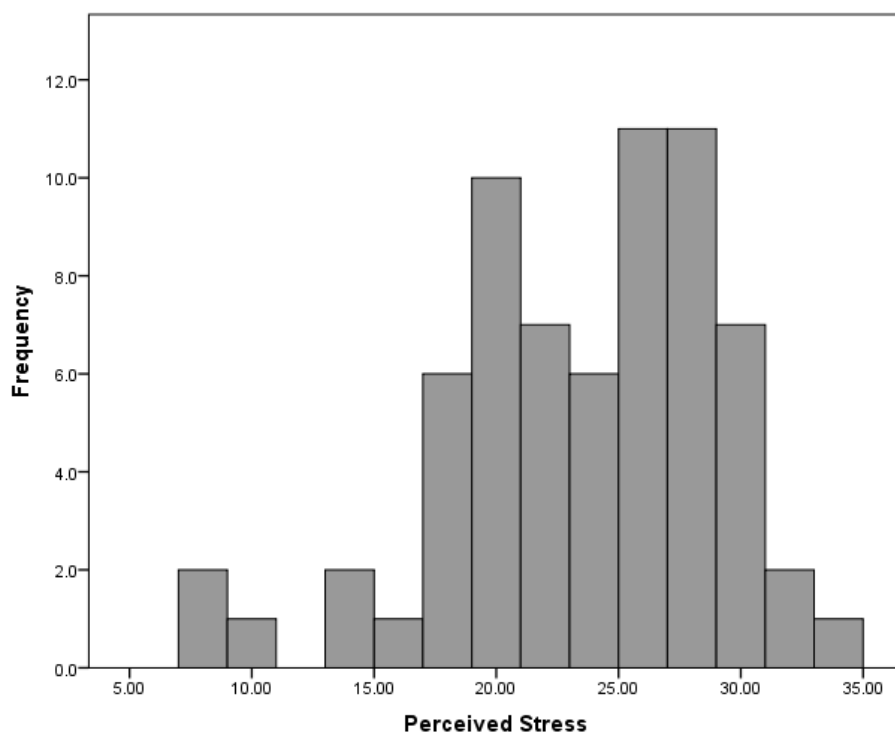


Figure 2. Distribution of perceived stress scores.

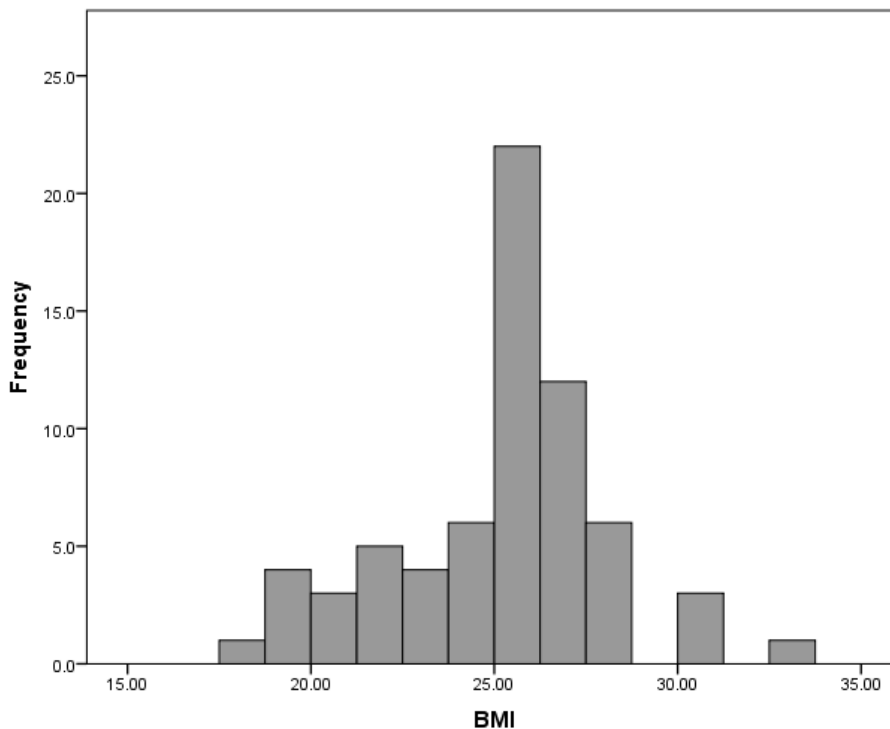


Figure 3. Distribution of BMI values.

Detailed Analysis

Research Questions and Hypothesis

Research Question. What statistically significant associations are there between insufficient sleep, abnormal eating patterns, and level of weight gain among female Filipino nurses working the night shift in the hospital?

H_0 1: There are no statistically significant associations between insufficient sleep, abnormal eating patterns, and level of weight gain among female Filipino nurses working the night shift in the hospital.

H_{a1} : There are statistically significant associations between insufficient sleep, abnormal eating patterns, and level of weight gain among female Filipino nurses working the night shift in the hospital.

To address Research Question 1, a series of Spearman correlations were conducted to examine the two-way associations between average hours of sleep between shifts, sleep quality, frequency of missing meals at work, global PSQI, and BMI. A Spearman correlation is an appropriate statistical analysis when assessing the strength of association between two variables and when at least one variable is measured on an ordinal level (Rebekić et al., 2015). Cohen's (1992) standard was used to assess the strength of the correlation coefficient to determine the strength of the relationship, where coefficients between .10 and .29 represent a small association; coefficients between .30 and .49 represent a medium association; and coefficients above .50 represent a large association or relationship.

There was a statistically significant association between average hours of sleep between shifts and BMI, $r_s = .35, p = .004$. There was a moderate positive relationship between average hours of sleep between shifts and BMI. There was a statistically significant association between sleep quality and BMI, $r_s = .25, p = .043$. There was a small positive relationship between sleep quality and BMI. There was a statistically significant association between frequency of meals missed while working and BMI, $r_s = .28, p = .024$. There was a small positive relationship between frequency of missing meals while working and BMI. The null hypothesis (H_01) for Research Question 1 was partially rejected. Due to the low sample size used in the research, there is a lack of statistical power in the findings (Williams & Bornmann, 2016). Therefore, the significant

and nonsignificant findings interpretation must be with caution. Table 3 presents the findings of the Spearman correlations.

Table 3

Spearman Correlations between Insufficient Sleep, Abnormal Eating Patterns, and BMI

	BMI	
	r_s	p
Average hours of sleep between shifts	.35	.004
Sleep quality	.25	.043
Frequency of missing meals while working	.28	.024
Global PSQI	.05	.713

Research Question 2. What statistically significant associations are there between working 12-hour shifts, number of years working on the night shift, and level of weight gain among female Filipino nurses working the night shift in the hospital?

H_02 : There are no statistically significant associations between working 12-hour shifts, number of years working on the night shift, and level of weight gain among female Filipino nurses working the night shift in the hospital.

H_a2 : There are statistically significant associations between working 12-hour shifts, number of years working on the night shift, and level of weight gain among female Filipino nurses working the night shift in the hospital.

To address research question two, a series of Spearman correlations were conducted to examine the two-way associations between working the night shift, shift extending to 12 hours, length of time in the current shift, and BMI. There was a statistically significant association between length of time working the current shift and BMI, $r_s = .30$, $p = .014$. The sign and strength of the coefficient suggests there was a

moderate positive relationship between length of working current shift and BMI.

Working the night shift and having shifts extend to 12 hours did not show a significant association on BMI. Due to the significant association between work night shift and BMI, the null hypothesis (H_02) for research question two was partially rejected. Due to the low sample size collected for the research, there is a lack of statistical power in the findings (Williams & Bornmann, 2016). Therefore, the significant and non-significant findings interpretation must be with a level of caution. Table 4 presents the findings of the Spearman correlations.

Table 4

Spearman Correlations between Working Night Shift, Shift Extending to 12 Hours, Length of Time in Current Shift, and BMI

	BMI	
	r_s	p
Work night shift	.02	.855
Shift extend to 12 hours	-.04	.723
Length of time in current shift	.30	.014

Research Question 3. What statistically significant associations are there between age, marital status, and level of weight gain among female Filipino nurses working the night shift in the hospital?

H_03 : There are no statistically significant associations between age, marital status, and level of weight gain among female Filipino nurses working the night shift in the hospital.

H_a3 : There are statistically significant associations between age, marital status, and level of weight gain among female Filipino nurses working the night shift in the

hospital.

To address research question three, a Spearman correlation was conducted to examine the two-way associations between age and BMI. Age was not statistically associated with BMI level. The findings of the correlation are presented in Table 5.

Table 5

Spearman Correlations between Age and BMI

	BMI	
	r_s	p
Age	.22	.069

An analysis of variance (ANOVA) was conducted to examine for differences in BMI by marital status. An ANOVA is an appropriate statistical analysis when comparing differences in a continuous dependent variable between groups (Rojewski & Lee, 2012). The continuous dependent variables in this analysis corresponded to BMI. The independent grouping variables in this analysis corresponded to marital status – single, married, divorced, and widowed.

Prior to analysis, the assumptions of the ANOVA were assessed. Normality of the dependent variables was tested with a Kolmogorov Smirnov (KS) test. The results of the KS test indicated statistical significance for BMI ($p = .006$); therefore, the assumption was not met for this variable. Although the normality assumption was not met through the KS test, the ANOVA is robust for stringent assumptions when the sample size is sufficiently large ($n \geq 50$) (Stevens, 2009). Homogeneity of variance was assessed with Levene's test and the results were statistically significant for specialty unit ($p = .611$); thus, the assumption was met for this variable.

The results of the ANOVA were statistically significant for marital status ($F(3, 63) = 7.09, p < .001, \text{partial } \eta^2 = .252$), suggesting that there were statistical differences by marital status. Through examination of post hoc tests via Tukey comparisons, it was determined that married participants had significantly higher BMI levels in comparison to single and divorced participants. Due to significant differences in marital status, the null hypothesis (H_03) was partially rejected. Because of the low sample size collected for the research, there is a lack of statistical power in the findings. Therefore, the significant findings must be interpreted with a level of caution. Table 6 presents the findings of the ANOVA. Table 7 presents the descriptive statistics of BMI by marital status.

Table 6

ANOVA for BMI by Marital Status

Source	Hypothesis df	Error df	F	p	η^2
Marital Status	3	63	7.09	<.001	.252

Table 7

Means and Standard Deviations for BMI by Marital Status

Continuous Variables	n	M	SD
Marital Status			
Single	11	23.13	2.81
Married	50	26.01	2.51
Divorced	4	21.67	1.91
Widower	2	22.87	4.14

Research Question 4. What statistically significant associations are there between stress, nursing units, decreased physical activity, and level of weight gain among

female Filipino nurses working the night shift in the hospital?

H_04 : There are no statistically significant associations between stress, nursing units, decreased physical activity, and level of weight gain among female Filipino nurses working the night shift in the hospital.

H_A4 : There are statistically significant associations between stress, nursing units, decreased physical activity, and level of weight gain among female Filipino nurses working the night shift in the hospital.

To address research question four, a series of Spearman correlations were conducted to examine the two-way associations between stress, decreased physical activity, and BMI. Perceived stress and physical activity did not have a significant association with BMI. The findings of the Spearman correlations are presented in Table 8.

Table 8

Spearman Correlations between Perceived Stress, Physical Activity, and BMI

	BMI	
	r_s	p
Perceived Stress	-.03	.832
Physical Activity	-.13	.289

An analysis of variance (ANOVA) was conducted to examine for differences in BMI by specialty unit. The continuous dependent variables in this analysis corresponded to BMI. The independent grouping variables in this analysis corresponded to specialty unit – medical surgical unit, telemetry unit, critical care units, operating room, and labor unit.

Prior to analysis, the assumptions of the ANOVA were assessed. Normality of the dependent variables was tested with a Kolmogorov Smirnov (KS) test. The results of the KS test indicated statistical significance for BMI ($p = .006$); therefore, the assumption was not met for this variable. Although the normality assumption was not met through the KS test, the ANOVA is robust for stringent assumptions when the sample size is sufficiently large ($n \geq 50$) (Stevens, 2009). Homogeneity of variance was assessed with Levene's test and the results were statistically significant for specialty unit ($p = .017$); thus, the assumption was not met for this variable. Therefore, the findings of the ANOVA will be interpreted with caution.

The results of the ANOVA were not statistically significant for specialty unit ($F(4, 62) = 2.33, p = .066, \text{partial } \eta^2 = .131$), suggesting that there were not statistical differences by specialty unit. Due to non-significance of the correlations and ANOVA, the null hypothesis (H_04) for research question four was not rejected. Because of the low sample size collected for the research, there is a lack of statistical power in the findings (Williams & Bornmann, 2016). Therefore, the non-significant findings interpretation must be with a level of caution. Table 9 presents the findings of the ANOVA. Table 10 presents the descriptive statistics of BMI by specialty unit.

Table 9

ANOVA for BMI by Specialty Unit

Source	Hypothesis df	Error df	F	p	η^2
Specialty Unit	4	62	2.33	.066	.131

Table 10

Means and Standard Deviations for BMI by Specialty Unit

Continuous Variables	<i>n</i>	<i>M</i>	<i>SD</i>
Specialty Unit			
Medical-Surgical Unit	29	24.37	2.50
Telemetry Unit	8	24.89	4.66
Critical Care Unit	24	26.54	2.20
Operating Room	2	24.80	1.13
Labor Unit	4	23.73	3.91

Multiple Linear Regression

A multiple linear regression was conducted as an ancillary analysis to examine the predictive relationship between the significant variables and BMI. A multiple linear regression is an appropriate statistical analysis when testing the predictive relationship between a group of predictors and a continuous criterion variable (Nimon & Oswald, 2013). In this analysis, the predictor variables corresponded to average hours of sleep between shifts, sleep quality, frequency of missing meals at work, length of time in current shift and marital status. The continuous criterion variable corresponded to BMI.

Prior to the regression analysis, the assumptions of normality, homoscedasticity, and absence of multicollinearity were tested. The normality assumption was tested by visual interpretation of a normal P-P plot between the expected cumulative probability and the observed cumulative probability. The raw data closely followed the trend line, thus the assumption of normality was met (see Figure 4). Homoscedasticity was tested by visual inspection of a residuals scatterplot. The assumption of homoscedasticity was met due to there not being a recurring pattern in the data (see Figure 5). The absence of multicollinearity assumption was tested by variance inflation factors (VIFs) and the assumption was met due to the predictors not having VIF values greater than 10 (Akinwande, Dikko, & Samson, 2015).

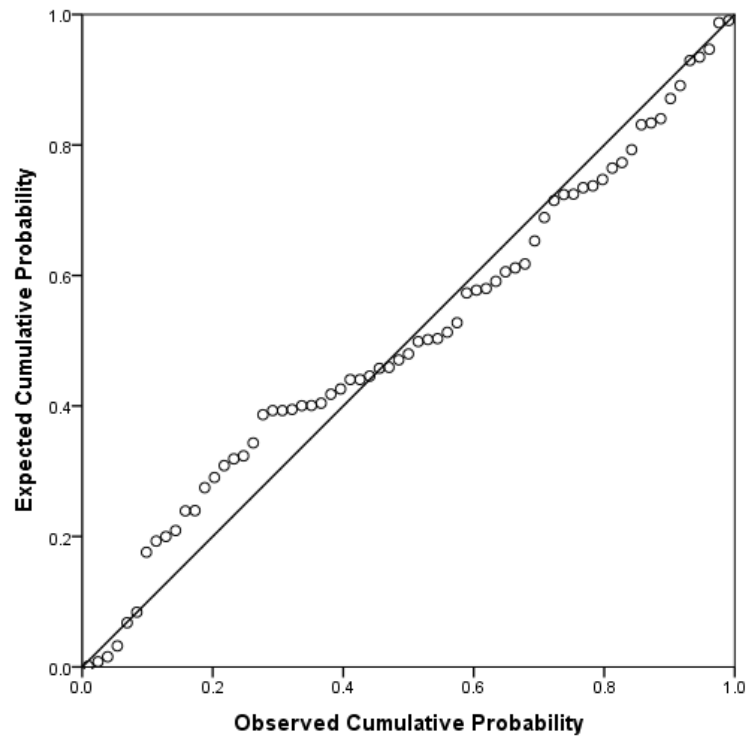


Figure 4. Normal P-P plot for BMI level.

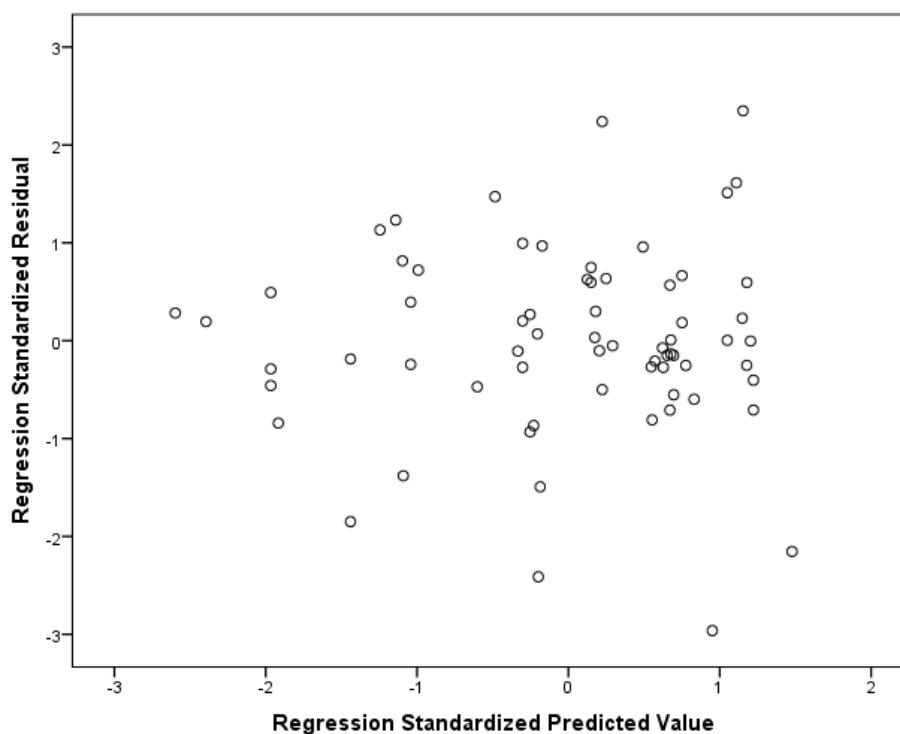


Figure 5. Standardized predicted values versus standardized residuals for the regression on BMI level.

Results of the overall model of the multiple linear regression were statistically significant, ($F(5, 61) = 6.58, p < .001, R^2 = .350$), suggesting that collectively there was a significant predictive relationship between the independent variables and BMI level. The R^2 value indicates that approximately 35.0% of the variance in BMI level can be explained by the predictor variables. Average hours of sleep between shifts ($t = 2.05, p = .045$), frequency of missing meals while working ($t = 2.31, p = .025$), and marital status ($t = 3.95, p < .001$) were significant positive predictors in the model. Because of the low sample size collected for the research, there is a lack of statistical power in the findings (Williams & Bornmann, 2016). Therefore, the significant and non-significant findings interpretation must be with a level of caution. The results of the multiple linear regression are presented in Table 11.

Table 11

Results for Regression with Factors Predicting BMI

Source	<i>B</i>	<i>SE</i>	β	<i>t</i>	<i>p</i>	VIF
Average hours of sleep between shifts	0.74	0.36	.25	2.05	.045	1.34
Sleep quality	-0.05	0.50	-.01	-0.10	.917	1.55
Frequency of missing meals while working	0.91	0.39	.24	2.31	.025	1.03
Length of time in current shift	-0.04	0.22	-.02	-0.19	.847	1.30
Marital Status (reference: single)	3.08	0.78	.47	3.95	<.001	1.30

Note. $F(5, 61) = 6.58, p < .001, R^2 = .350$

Summary

The purpose of this quantitative study was to explore the relationship between insufficient sleep, abnormal eating patterns, stress, nursing units, working 12-hour shifts, age, marital status, number of years on night shift, less physical activity, and the level of weight gain among female Filipino nurses working the night shift in community hospitals in the United States. This chapter presented the findings of the data collection and analysis. After reducing the numbers of responses for missing cases and outliers, descriptive statistics were examined from the complete responses of 67 participants.

For research question one, the findings of the Spearman correlations indicated that there was a significant association between average hours of sleep between shifts, sleep quality, frequency of missing meals at work, and BMI. For research question two, the findings of the Spearman correlations indicated that there was a significant association between length of time in the current shift and BMI. For research question three, the findings of the ANOVA indicated that there were significant differences in BMI levels by

marital status. For research question four, none of the variables were statistically associated with BMI. The five significant variables were entered into a multiple linear regression. Results of the overall model of the multiple linear regression were statistically significant, suggesting that collectively there was a significant predictive relationship between the predictor variables and BMI level. Average hours of sleep between shifts, frequency of missed meals while at work, and marital status were significant positive predictors in the model. Due to the research not obtaining the minimum sample size requirement, based on the prior power analysis, there is a lack of statistical power in the findings (Williams & Bornmann, 2016). Further interpretations of the statistics must be made with a level of caution.

In chapter 5, the statistical findings will continue to be examined. Connections will be made back to the existing literature and theoretical framework selected for the study. The chapter will conclude with limitations and suggestions for future research.

Chapter 5: Discussion, Limitations, Implications, and Conclusion

Introduction

The purpose of this study was to gather information on whether there are statistically significant associations between insufficient sleep, abnormal eating patterns, stress, nursing units, working 12-hour shifts, age, marital status, number of years on night shift, decreased physical activity, and level of weight gain among female Filipino nurses working the night shift in community hospitals in the United States. In the study, I employed a correlational and cross-sectional design. Data collection was conducted through Survey Monkey™ via the Internet. The study was conducted because of the increasing numbers of overweight and obese nurses in different racial populations, different cultures, and the different geographical locations around the world. This was the first study conducted among female Filipino nurses working night shift in the hospital.

With the use of Spearman correlations, there were significant associations between hours of sleep between shifts, sleep quality, missed meals, length of time on night shifts, and increased in BMI. In the ANOVA, I found significant differences in BMI levels by marital status. However, age was not significant to BMI. In multiple regression models, the results were statistically significant, but three variables, such as stress, nursing units, and decreased physical activity, failed to show statistical associations with BMI.

Interpretation of the Findings

Insufficient Sleep and Abnormal Eating Patterns

RQ1: What statistically significant associations are there between insufficient sleep, abnormal eating patterns, and level of weight gain among female Filipino nurses working the night shift in the hospital?

H_0 1: There are no statistically significant associations between insufficient sleep, abnormal eating patterns, and level of weight gain among female Filipino nurses working the night shift in the hospital.

H_a 1: There are statistically significant associations between insufficient sleep, abnormal eating patterns, and level of weight gain among female Filipino nurses working the night shift in the hospital.

I found that there were evidences to partially reject the null hypotheses, which indicated that there were small positive associations between insufficient sleep and abnormal eating patterns with BMI among female Filipino nurses working night shift in the hospital. Because there was a small positive relationship between missed meals and BMI, the null hypothesis was partially rejected.

In this study, I determined that the average hours of sleep between shift were 5 hours ($n=28$, 42%) which showed moderate positive relationship with BMI ($r_s = .35$, $p=.004$) and also indicated that there was a statistically significant association with BMI ($r_s = .25$; $p=.043$); the most missed meal was dinner ($n=33$, 49%), which indicated that there was statistically associations of frequently missed meal with BMI ($r_s = .28$, $p=.024$). The findings on insufficient sleep between shifts were confirmed with previous studies from Spaeth et al. (2013), who found that short sleep duration had associations between

weight gain and increased in BMI. According to Geiger-Brown et al. (2012), night shift workers had the shortest sleep duration between shifts compared to day shift that increased their risk of weight gain that lead to increase in BMI. The findings on quality of sleep was consistent with the previous studies conducted by Boughattas et al. (2014) and Vijayalaxmi et al. (2014), who reported that 60% of the night shift workers sleep quality were severely compromised and 30% of them complained of insomnia. Also, Kim et al. (2015) found that even a single night of disrupted sleep influenced energy consumption and increased metabolism that promoted frequent eating and increased snacking of high calorie food. The findings on abnormal eating patterns were consistent with previous research from Spaeth et al. (2013), Griep et al, (2014), and Vijayalaxmi et al.,(2014) who found that erratic eating patterns of night shift workers increased energy consumption that promoted increased snacking instead of eating a full meal, which was suggestive of metabolic imbalances that lead to weight gain.

Working 12-Hour Shifts and Number of Years on Night Shift

RQ2: What statistically significant associations are there between working 12-hour shifts, number of years on night shift, and level of weight gain among female Filipino nurses working the night shift in the hospital?

H₀1: There are no statistically significant associations between working 12-hour shifts, number of years on night shift, and level of weight gain among female Filipino nurses working the night shift in the hospital.

H_a2: There are statistically significant associations between working 12-hour shifts, number of years on night shift, and level of weight gain among female Filipino nurses working the night shift in the hospital.

I found that 12-hour shifts and length of time on night shift had significant associations with BMI. However, having worked extended hours beyond 12 hours did not show significant associations on BMI. The null hypothesis, therefore, can be partially rejected due to significant associations between night shift and number of years on night shift with BMI.

In this study, the variables 12-hour shifts and extended years of working the night shift demonstrated statistically significant associations with BMI ($r_s = .30, p = .014$). I found ($n=63, 94\%$) that having continued to work 12-hour shifts, and the length of working on night shift showed ($n=20$) nurses who have worked for 3 to 5 years, 30%, and ($n=16$) nurses who have worked for 21 to 35 years (24%).

In the findings on 12-hour shifts and number of years working the night shift, I found significant associations with BMI, which was confirmed from previous research findings. For example, Kim et al. (2013) found that the longer the nurses worked on night shift, the greater their risk of becoming overweight and obese. Also, Buss (2012) reported that weight gain was higher among night shift nurses. Other researchers have found that extended years of working the night shift caused health problems (Guo et al., 2013), such as hypertension, diabetes, heart diseases, some forms of cancer, and early disability (CDC, 2015). In addition, Gu et al. (2015) reported that women who worked night shift for extended period of time had significantly contributed to weight gain and increased BMI. Furthermore, Kim et al. found that long years of working the night shift demonstrated significant associations with increased BMI. Also, Vimalananda et al. (2015) found in African American women who worked the night shift for long durations had significant associations with increased BMI.

Age and Marital Status

RQ3: What statistically significant associations are there between age, marital status, and level of weight gain among female Filipino nurses working the night shift in the hospital?

H_01 : There are no statistically significant associations between age, marital status, and level of weight gain among female Filipino nurses working the night shift in the hospital.

H_{a3} : There are statistically significant associations between age, marital status, and level of weight gain among female Filipino nurses working the night shift in the hospital.

I found that age of female Filipino nurses showed no statistical association with BMI. However, marital status, particularly married participants, had significantly higher BMI levels compared to single and divorced participants. Due to significant differences in marital status, the null hypotheses were partially rejected.

In this study, I did not find a statistical relationship with age and levels of BMI ($r_s = .22, p = .069$); however, the results of the ANOVA were significantly associated with BMI ($F(3,63) = 7.08, p < .001$, partial $\eta^2 = .252$). This study's results on age was not aligned with the previous studies from Letvak et al. (2013), who found that the age of nurses is factor that contributes to higher BMI compared to younger nurses. Contrary to the results of this study on age, Vimalananda et al. (2015) found that women younger than 50-years-old gained weight and became diabetics than those who never work night shift. Likewise, Boughattas et al., (2014) reported that nurse's age influenced sleep

quality and duration that were significantly associated with weight gain and changed in BMI.

In this study, I found significant associations with marriage and levels of BMI. This result was confirmed from the previous research of Kim et al. (2013), who found in that female married nurses had significant high risk of overweight and obesity. Mata et al. (2015) found that married female had higher BMI than those who never married.

Stress, Nursing Units, and Decreased Physical Activity

RQ4: What statistically significant associations are there between stress, nursing units, decreased physical activity, and level of weight gain among female Filipino nurses working the night shift in the hospital?

H04: There are no statistically significant associations between stress, nursing units, decreased physical activity, and level of weight gain among female Filipino nurses working the night shift in the hospital.

H_a4: There are statistically significant associations between stress, nursing units, decreased physical activity, and level of weight gain among female Filipino nurses working the night shift in the hospital.

I failed to find significant associations between stress, nursing units, and decreased physical activity with BMI among female Filipino nurses working the night shift in the hospital; therefore, the null hypotheses was not rejected.

In this study, the analysis on perceived stress ($r_s = .03$, $p = .832$), decreased physical activity ($r_s = .13$, $p = .289$), and nursing units ($F(4,62) = 2.33$, $p = .066$, partial $\eta^2 = .131$) failed to show significant associations with BMI of female Filipino nurses working the night shift in the hospital. These findings were not aligned with previous studies from Buss

(2012); Vijayalaxami, George, and Nambiar (2014); Coomarasamy et al. (2014); and Han, Choi-Kwon, and Kim (2015) who found that stress and night shift work were strongly influenced nurses by unhealthy eating habits of high calorie food that caused weight gain. With regards to specialty units, such as ER & ICU (Boughattas et al., 2014); ICU, ER, and medical/surgical units (Dagget et al., 2016) found that night shift nurses worked on these nursing units were significantly stressed and impacted their unhealthy eating habits of high calorie food that led them to gain weight. Also, Amani and Gill (2013), found in their previous research that stress and night shift work had strong associations with increased BMI.

Many studies proved that physical activity has been identified as having tremendous benefits to overall health (Coomarasamy et al., 2014; Peplonńska et al., 2014). However, decreased physical activity is one of the many important factors that caused weight gain, overweight, and obesity (Coomarasamy et al., 2014). The study findings failed to show the correlation of decreased physical activity with BMI among female Filipino nurses working the night shift in the hospital that is contrary to the previous studies. According to Vijayalaxmi et al. (2014) and Coomarasamy et al. (2014), night shift workers suffered physical exhaustion from work that hindered their physical ability to engage in any form of exercise. Likewise, Kim et al., (2013) found from previous research that decreased physical activity had strong significant associations with increased BMI among night shift workers.

Analysis of Theoretical Framework

The theoretical framework employed in this study was the LEAD. This model was developed by Huang et al (2009) in coordination with the Institute of Medicine as an

effective approach to address complicated health issues, such as weight gain (Chatterji et al., 2014).

Weight gain, overweight, and obesity are caused by multifactorial dimensions of human behaviors, such as personal lifestyle, unhealthy food choices, environmental, culture, and socio-economic (Chatterji et al., 2014). The central doctrine of this model is weight management at the local, state, and individual level. Findings from this study were confirmed on the LEAD theoretical framework. The theoretical implications on weight gain among female Filipino nurses now add new information to support the use of LEAD theoretical framework in the weight management.

Limitations of the Study

This study has several limitations. First, due to cross-sectional design, the causality between occupational factors, such as night shifts, meals missed, 12-hour shift, quantity and quality of sleep, weight gain, overweight, and obesity cannot be ascertained (Sedgwick, 2015). Second, this study completely relied on the self-reported data, which may be suggestive of data inaccuracy that weakens the study validity (Zhang et al., 2017). Social desirability is another factor of bias that leads to under-reporting of weight as a determinant of BMI (Sedgwick, 2015). Third, this study has a small sample size and participants were conveniently selected. The result may be choice biases (Etikan et al., 2016). Because of the study sample was drawn from one hospital and the heterogeneity of the participants, the findings limit the generalizability or comparison to different racial population and different cultures. Finally, some possible confounders of overweight and obesity were not part of the study, such as dietary habits, smoking, alcohol use, and caffeine use (Letvak et al., 2013). These confounders may provide confounding effect

related to weight gain and obesity among female Filipino nurses working the night shift in the hospital.

Recommendations

This appears to be the first study conducted among female Filipino nurses working the night shift in the hospital. Because this study employed a cross-sectional design, longitudinal and cohorts studies are recommended for future study with this population. This study was focused on the night shift on a single population comprised of female nurses. Future cross-sectional study with the day shift and other racial population and different culture is highly recommended to compare the study result. Literature showed that overweight and obesity had been reported in different countries, such as South Africa, Australia, the United Kingdom, and New Zealand (Phiri et al., 2014), Japan (Nagashima et al., 2013), the Republic of Korea (Jung, & Lee, 2015), Malaysia (Coomarasamy et al., 2014), the United States (Huth et al., 2013), Brazil (Marqueze et al., 2013), Republic of Taiwan (Lint et al., 2012), Europe (Saksrik- Lehouillierm et al., 2012), and in Canada (Smith et al., 2012).

Based upon the results of this study, insufficient sleep, married nurses, erratic eating patterns, a working 12-hour shift, and extended years of working on night shift were correlated to weight gain associated with BMI among female Filipino nurses. It is recommended that night shift nurses must play an active role in promoting their health in order to prevent the development of chronic medical conditions, such as obesity, diabetes, hypertension, stroke, heart disease, and early disability (CDC, 2014; WHO, 2015). It is also recommended that hospital administrators and nursing leaders need to consider changing policies on working conditions within the organization. Some of the

suggested changes in organizational policies may include allowing nurses frequent breaks to decrease work fatigue and prevent medication errors (Geiger-Brown et al., 2012; Caruso, 2014); focus on nutrition and dietary education and provide healthier food choices at the hospital cafeteria (Imes & Burke, 2014); provide working schedules that reduce night shift work (Asaoka et al., 2013), and encourage nurses to get sleep more than seven hours per day (Caruso, 2014). Finally, nurses should be encouraged to consult with their health care providers on a regular basis for optimal health (CDC, 2015).

Implications for Social Change

At the individual level, the potential social change as a result of this study is the provision of important information that is critical for all nurses to help understand the negative implications of night shift work on health. Nurses are equipped with knowledge on health promotion and disease prevention (Caruso, 2014), but may not be aware of the negative implications of night shift work. Information from this study enables nurses to take care of their health and prevent the development of chronic medical conditions, such as obesity, diabetes, hypertension, heart diseases, stroke, some forms of cancer, early disability, and premature death (R. Apellido, personal statement, July 17, 2017). Maintaining and improving the health of the nursing workforce has positive impact in their ability to provide quality care to patients (Caruso, 2014). According to Huth et al. (2012), institution-wide education on the importance of quantity and quality of sleep has positive implications on the health of nurses working the night shift. At the organizational level, information from this study could facilitate change in policies and improve working conditions that promote the health and well being of nurses as discussed in the previous section. At the local, state, and federal level, the potential social change as a

result of this study is providing the information critical to public education and health promotion in the prevention of overweight and obesity that may help solve problems with overweight and obesity epidemic. Health promotion and disease prevention at these levels help reduce medical expenditures to the current health care system.

Conclusion

There is a large body of evidence from previous studies that the cause of unhealthy weight gain or overweight and obesity is multifactorial. Nurses are equipped with adequate knowledge on health promotion and disease prevention and they provide education to their patients as well as the general population. However, this study showed that night shift female Filipino nurses are faced with unhealthy weight gain and increased in BMI. Findings from this study proved that occupational factors, such as insufficient sleep between shifts, abnormal eating habits, working 12-hour shifts, and extended years of working night shift had significant associations with weight gain and BMI. Future research in a larger sample size is needed to validate the findings from this study and further exploration of occupational factors associated with weight gain and obesity among nurses must be conducted in the future. Finally, nurses need to proactively take care of their health so that they can provide quality patient care.

References

- Akinwande, M. O., Dikko, H. H., & Samson, A. (2015). Variance inflator factor. As a condition for inclusion of superior variable(s) in regression analysis. *Open Journal of Statistics, 5*, 754-767. doi:10.4236/ojs.2015.57075
- Amani, R., & Gil, T. (2013). Shift working, nutrition, and obesity: Implications for workforce health- a systematic review. *Asia Pacific Journal of Clinical Nutrition, 22*(4), 505-515 doi:10.6133/apjcn.2013.22.4.11
- Asaoka, S., Aritake, S., Komada, Y., Ozaki, A., Odagiri, Y., Inoue, S., ... Inoue, Y. (2013). Factors associated with shift work disorder in nurses working with rapid-rotation schedules in Japan: the nurses' sleep health project. *Chronobiology International, 30*(4), 628-36. doi:10.3109/07420528.2012.762010
- Beccuti, G., & Pannain, S. (2014). Sleep and obesity. *Current Opinion on Nutrition and Metabolic Care, 14*(4), 402-412. doi:10.1097/mco.0b013e3283479109
- Boughattas, W., El Maalel, P. A., Chikh, R. B., Maoua, M., Houda, H., Braham, A., ... Mrizak, N. (2014). Hospital night shift and its effects on the quality of sleep, the quality of life, and vigilance troubles among nurses. *International Journal of Clinical Medicine, 5*, 572-583 doi:10.4236/ijcm.2014.510079
- Buja, A., Zampieron, A., Mastrangelo, G., Petean, M., Vinelli, A., Cerne, D., ... Baldo, V. (2013). Strain and health implications of nurses' shift work. *International Journal of Occupational Medicine and Environmental Health, 26*(4), 511-521 doi:10.2478/S13382-013-0122-2

- Buss, J. (2012). Association between obesity and stress and shift work among nurses. *Workplace Health and Safety*, 60(10), 453-358. doi:10.3928/2650799-20120926-66
- Buysse, D. J., Reynolds, C. F., Monk, T. H., Berman, S. R., & Kupfer, D. J. (1989). The Pittsburgh Sleep Quality Index (PSQI): A new instrument for psychiatric research and practice. *Psychiatry Research*, 28, 193–213. [http://dx.doi.org/10.1016/0165-1781\(89\)90047-4](http://dx.doi.org/10.1016/0165-1781(89)90047-4)
- Caruso, C. C. (2014). Negative impact of shift work and long work hours. *Rehabilitation Nursing*, 39, 16-25. doi:10.1002/rnj.107
- Centers for Disease Control and Prevention. (2015; 2014). *Adult obesity facts*. Retrieved from <https://www.cdc.gov/obesity/data/adult.html>
- Chatterji, M., Green, L., & Kumanyika, S. (2014). L.E.A.D.: A framework for evidence gathering and use for the prevention of obesity and other complex public health problems. *Health Education and Behavior*, 41(1), 85-99. doi:10.1177/1090198113490726
- Chen, P. G., Auerback, D. I., Muench, U., Curry, L. A., & Bradley, E. H. (2013). Policy solutions to address the foreign-educated and foreign born healthcare workforce in the United States. *Health Affairs*, 32(11), 1906-1913. doi:10.1377/hlthaff.2013.0576
- Chung, M. H., Kuo, T. B., Hsu, N., Chu, H., Chou, K. R., & Yang, C. C. (2012). Recovery after three-shift work: Relation to sleep related cardiac neuronal regulation in nurses. *Industrial Health*, 50, 24-30.

- Cohen, S., Kamarck, T., & Mermelstein, R. (1983). A global measure of perceived stress. *Journal of Health and Social Behavior*, 24, 385-396.
- Cohen, J. (1992). A power primer. *Psychological Bulletin*, 112(1), 155-159.
- Coomarasamy, J. D., Neri, D. L., & Sukumanan, S. (2014). Prevalence of obesity and daily lifestyles of registered nurses in Malaysia. *International Journal of Innovation and Applied Studies*, 7(3), 1202-12-8.
- Dagget, T., Molla, A., & Belachew, T. (2016). Job related stress among nurses working in Jimma Zone public hospitals, South West Ethiopia: A cross-sectional study. *BMC Nursing*, 15, 39. doi:10.1186/s12912-016-0158-2
- Deori, D. (2012). The experience of night shift registered nurses in an acute care setting: A phenomenological study. *International Journal of Latest Research in Science and Technology*, 1(2), D201-D204.
- Depner, C. M., Stothard, E. R., & Wright, K. P. (2014). Metabolic consequences of sleep and circadian disorders. *Current Diabetes Report*, 14(7), 1-9.
- Etikan, I., Musa, S., & Alkassim, R. (2015). Comparison of convenience sampling and purposive sampling. *American Journal of Theoretical and Applied Statistics*, 5(1), 1-4, doi:10.11648/j.ajtas.20160501.11
- Faul, F., Erdfelder, E., Buchner, A., & Lang, A. G. (2014). G*Power Version 3.1.9 [computer software]. Universität Kiel, Germany. Retrieved from <http://www.gpower.hhu.de/en/html> I stopped reviewing here.
- Fisharaki, G., Kazemnejad, A., Zayeri, F., Rowzati, M., & Akbari, H. (2012). Relationship between shift work and obesity: A retrospective cohort study. *Iranian Journal of Military Medicine*, 14(2), 93-97.

- Gallant, A. R., Lundgreen, L., & Drapeau, V. (2012). The night eating syndrome and obesity. *Obesity Review*, *13*(6), 528-536.
- Geiger-Brown, J., Rogers, V. E., Trinkoff, A. M., Kane, R. L., Bausell, R. B., & Scharf, S. M. (2012). Sleep, sleepiness, fatigue, and performance of 12-hour-shift nurses. *Chronobiology International*, *29*(2), 211-219.
- Giurgiu, D., & Bardac, D. (2013). Overweight, obesity, and physical hypercholesterolemia prevalence in medical staff from Romanian academic county hospital: A cross-sectional study. *Acta Medica Transilvanica*, *11*(2), 196-201.
- Griep, R. H., Bastos, L. S., Fonseca, M. J., Silva-Costa, A., Potela, L. F., Toivanen, S., . . . Rotenberg, L. (2014). Years worked at night and body mass index among registered nurses from eighteen hospitals in Rio de Janeiro, Brazil. *BMC Health Services Research*, *14*(1), 603. doi:10.118/s/2913-014-0603-4
- Grove, S. K., Burns, N., & Gray, J. R. (Eds.). (2013). *The practice of nursing research: Appraisal, synthesis, and generation of evidence* (7th ed.). China: Elsevier.
- Gu, F., Han, J., Laden, F., Pan, A., Caporaso, N. E., Stamfer, M. J., . . . Schemhammer, E. S. (2015). Total and cause-specific mortality of U.S. nurses working on rotating shifts. *American Journal of Preventive Medicine*, *48*(3), 241-252. <https://doi.org/10.1016/j.amepre.2014.10.018>
- Guo, Y., Liu, Y., Huang, X., Rong, Y., He, M., Wang, Y., . . . Chen, W. (2013). The effects of shift work on sleeping quality, hypertension, and diabetes in retired workers. *PLOS One*, *8*(8), e71107. doi:10.1317/journal.pone.0071107

- Haegele, J. A., & Hodge, S. R. (2015). Quantitative Methodology: A guide for emerging physical education and adapted physical education researchers. *Physical Education, 71*, 59-75.
- Han, K., Trinkoff, A. M., Storr, C. L., Geiger-Brown, J., Johnson, K. L., & Park, S. (2012). Comparison of job stress and obesity in nurses with favorable and unfavorable work schedule. *Journal of Occupational and Environmental Medicine, 54*(8), 928-932. doi:10.1097/JOM.0b013e31825b1bfc
- Hardigan, P. C., Succar, C. T., & Fleisher, J. M. (2012). An analysis of response rate and economic costs between mail and web-based surveys among practicing dentist: A randomized trial. *Journal of Community Health, 37*, 383-395.
doi:10.1007/s10900-011-9455-6
- Hawkes, C., Smith, T. G., Jewell, J., Wardle, J., Hammond, R. A., Friel, S., & Kain, J. (2015). Smart food policies for obesity prevention. *Lancet, 385*(9985), 2410-2421.
- Huang, T. T., Drewnowski, A., Kumanyika, S., & Glass, T. A. (2009). A system-oriented multilevel framework for addressing obesity in the 21st century. *Preventing Chronic Disease, 6*(3), A82. Retrieved from http://www.cdc.gov/pcd/issues/2009/jul/09_0013.htm
- Huth, J. J., Eliades, A., Handwork, C., Englehart, J. L., & Messenger, J. (2012). Shift work, quality of sleep, and elevated body mass index in pediatric nurses. *Journal of Pediatric Nursing, 28*, e64-e73. doi:10.1016/j.pedn.2013.02.032

- Imes, C. C., & Burke, L. E. (2014). The obesity epidemic: The USA as a cautionary tale for the rest of the world. *Current Epidemiology Report, 1*, 82-88.
doi:10.1007/s40471-014-0012-6
- Jermendy, G., Nadas, J., Hegyi, I., Vasas, I., & Hidvegi, T. (2012). Assessment of cardiometabolic risk among shift workers in Hungary. *Health and Quality of Life Outcomes, 10*(1), 18.
- Jung, H. S., & Lee, B. (2015). Contributors to shift work tolerance in South Korean nurses working rotating shift. *Applied Nursing Research, 28*(2), 150-155.
doi:10.1016/apnr.2014.09.007
- Keusch, F. (2012). How to increase response rates in list-based web survey samples. *Social Science Computer Review, 30*(3), 380-388.
doi:10.1177/0894439311409709
- Kim, T. W., Jeong, J. H., & Hong, S. C. (2015). The impact of sleep and circadian disturbance on hormones and metabolism. *International Journal of Endocrinology, 2015*. <http://dx.doi.org/10.1155/2015/591729>
- Kim, M. J., Son, K. H., Park, H. Y., Choi, D. J., Yon, C. H., Lee, H. Y., . . . Myeong-Chan, C. (2013). Association between shift work and obesity among female nurses: Korean Nurses' Survey. *BMC Public Health, 13*, 1204. doi:10.1186/1471-2458-13-1204
- Krumpal, I. (2013). Determinants of social desirability bias in sensitive surveys: a literature review. *Quality & Quantity, 47*(4), 2025-2047.

- Kumanyika, S., Brownson, R. C., & Cheadle, A. (2012). The L.E.A.D. framework: Using tools from evidence-based public health to address evidence needs for obesity prevention. *Preventing Chronic Disease, 9*, 120157. doi:10.5888/pcd9:121057
- Kwon, J., Park, J. W., Park, J. S., Kim, S., Choi, H., & Lim, S. (2016). The relationship between night work and involuntary weight gain: Data from the fifth Korean National Health and Nutrition Examination Survey (KNHANES 2010-2012). *Annals of Occupational and Environmental Medicine, 28*(4), 1. doi:10.1186/s40557-010-0088-1
- Lee, G. J., Kim, K., Kim, S., Kim, J., Suh, S., Son, B., . . . Choi, J. (2016). Effect of shift work on abdominal obesity among 20-39-year-old-female nurses: A 5-year retrospective longitudinal study. *Annals of Occupational and Environmental Medicine, 28*-69. doi:10.1186/s40557-016-0148-6
- Letvak, S., Ruhm, C., & Gupta, S. (2013). Differences in health, productivity and quality of care in younger and older nurses. *Journal of Nursing Management, 21*, 914-921. doi:10.1111/jonm.12181
- Lewis, E., Moscar, A., King, C., & Hogan, K. (2012). Shift work and development of chronic disease. *CAND Vital Link, 17*-22.
- Lin, P. C., Chen, C. H., Pan, S. P., Pan, C. H., Chen, C. J., Chen, Y. M., . . . Ming-Tsang, W. (2012). A typical work schedules are associated with poor sleep quality and mental health in Taiwanese female nurses. *International Archives of Occupational and Environmental Health, 85*, 877-884. doi:10.1007/s00420-011-0730-8

- Lin, S. H., Liao, W. C., Chen, M.Y., & Fan, J. Y. (2014). The impact of shift work in nurses' job Stress, sleep quality, and self-perceived health status. *Journal of Nursing Management*, 22, 604-612.
- Lozano-Kühne, J. P., Aguila, M. E. R., Manalang, G. F., Chua, R. B., Gabud, R. S., & Mendoza, E. R. (2012). Current State and Future Directions. *Philippine Science Letters*, 5(1), 17-29.
- <https://login.proxy.lib.fsu.edu/login?url=http://search.proquest.com.proxy.lib.fsu.edu/ocview/219400300?accountid=4840>
- Maddox, N. (2013). Nutrition for night-shift nurses. *JAMA*, 310(7), 687-688.
- Markwald, R. R., Melanson, E. L., Smith, M. R., Higgins, J., Perrault, L., Eckel, R. H., . . . Wright, K. P. (2013). Impact of insufficient sleep on total daily energy expenditure, food intake, and weight gain. *Proceedings of the National Academy of Sciences*, 110(14), 5695-5700. doi:10.1073/pnas.1216951110
- Marqueze, E. C., Lemos, L. C., Soares, N., Lorenzi-Filho, G., & Moreno, C. R. (2012). Weight gain in relation to night work among nurses. *Work: A Journal of Prevention, Assessment and Rehabilitation*, 41, 2043-2048. doi:10.3233/WOR-2012-0429-2043
- Mata, J., Frank, R., & Hertwig, R. (2015). Higher body mass index, less exercise, but healthier eating in married adults: Nine representative surveys across Europe. *Social Science & Medicine*, 138, 119-127.
- McFadden, E., Jones, M. E., Shoemaker, M. J., Ashworth, A., & Swerdlow, A. J. (2014). The relationship between obesity and exposure to light at night: Cross-sectional

- analysis of over 100,000 women in the Breakthrough Generation Study. *American Journal of Epidemiology*, KWU117. doi:10.1093/aje/kuw117
- McNeil, J., Doucet, E., & Chaput, J. P. (2013). Inadequate sleep as a contributor to obesity and type 2 diabetes. *Canadian Journal of Diabetes*, 37, 103-108. doi:10.106/j.jcjd.2013-02-060
- Nagashima, S., Masutani, E., & Wakamura, T. (2014). Food intake, behavior, and chronotype of Japanese nurses working irregular shifts. *International Journal of Psychological Studies*, 6(2), 107-116. doi:10.5539/ijps.v6n2p107
- Nahm, E. S., Warren, J., Zhu, S., An, M., & Brown, J. (2012). Nurses' self-care behaviors related to weight gain and stress. *Nursing Outlook*, 60, E23-E31. doi:10.1016/j.outlook.2012.04.005
- Najimi, A., Gourdarzi, A. M., & Sharifirad, G. (2012). Causes of job stress in nurses: A cross-sectional study. *Iran Journal of Nursing and Midwifery Research*, 17(4), 301-305.
- National Institute of Health. (2012). How are overweight and obesity diagnosed? Retrieved from www.nhlbi.nih.gov/health/health-topics/topics/obe/diagnosis
- Nimon, K., & Oswald, F. (2013). Understanding the results of multiple linear regression: beyond standardized regression coefficients. *Organizational Research Methods*, 16(4), 650-674. doi:10.1177/1094428113493929
- Oakes, J. (2007). Statistical power & sample size: some fundamentals for clinician researchers. *Essentials of Clinical Research*. New Yorker, NY: Springer
- Patterson, P. D., Buysse, D. L., Weaver, M. D., Calloway, C. W., & Yealy, D. M. (2015). Recovery between work shifts among emergency medical services clinicians.

Prehospital Emergency Care, 19(3), 365-375.

doi:10.3109/10903127.2014.995847

Peplonska, B., Burdelak, W., Kryszka, J., Bukowska, A., Marcenkiewicz, A., Sobala,

W., . . . Rybacki, M. (2014). Night shift work and modifiable lifestyle factor.

International Journal of Occupational Medicine and Environmental Health,

27(5), 693-706. doi:10.2478/s/13382-014-0298-0

Perry, G. S., Patil, S. P., & Presley-Cantrell, L. R. (2013). Raising awareness of sleep as a healthy behavior. *Preventing Chronic Disease*, 10, 130081.

doi:10.5888/pcd10.130081

Phiri, L. P., Draper, C. E., Lambert, E. V., & Kolbe-Alexander (2014). Nurses' lifestyle

behaviors, health priorities and barriers to living a healthy lifestyle: A qualitative descriptive study. *BMC Nursing*, 13(1), 38.

Quist, H. G., Christensen, U., Christensen, K. B., Aust, B., Borg, V., & Bjorner, J. B.

(2013). Psychological work environment factors and weight change: A

prospective study among Danish health care workers. *BMC Public Health*, 13(1),

1. doi:10.1186/1471-2458-13-43

Ramin, C., Devore, E. E., Wang, W., Pierre-Paul, J., Wegrzyn, L. R., & Schernhammer,

E. V. (2015). Night shift work at specific age ranges and chronic disease risk factors. *Occupational Environmental Medicine*, 72(2), 100-107.

doi:10.1136/oemed-2014-102292

Rebekić, A., Lončarić, Z., Petrović, S., & Marić, S. (2015). Pearson's or spearman's

correlation coefficient-which one to use? *Poljoprivreda (Osijek)*, 21(1), 47-54

doi:10.1847/poljo.21.2.8

- Rojewski, J. W., & Lee, I. H. (2012). Used of *t*-test and ANOVA in career technical education coefficient-which one to use? *Poljoprivreda (Osijek)*, 21(1), 47-54
doi:10.184/poljo.21.2.8
- Saksvik-Lehouillier, I., Bjorvatn, B., Hetland, H., Sandal, G. M., Moen, B. E., Mageroy, N., . . . Pallesen, S. (2012). Individual, situational and lifestyle factors related to shift work tolerance among nurses who are new and experienced on night work. *Journal of Advance Nursing*, 69(5), 1136-1146. doi:10.1111/j.1365-2648.2012.06105.x
- Sedgwick, P. (2015). Cross-sectional studies: Advantages and disadvantages. *Reader in Medical Statistics and Medical Education*, doi:10.1136/bmj.g2276
- Spaeth, A. M., Dinges, D. F., & Goel, N. (2013). Effects of experimental sleep restriction on weight gain, caloric intake, and meal timing in healthy adults. *SLEEP*, 36(7), 981-990 doi:10.5665/sleep.2792
- Smith, M. R., & Eastman, C. I. (2012). Shiftwork: Health, performance and safety problems, traditional countermeasures, and innovative management strategies to reduce circadian misalignment. *Nature and Science of Sleep*, 4, 111-132.
- Smith, P., Fritschi, L., Reid, A., & Mustard, C. (2012). The relationship between shift work and body mass index among Canadian nurses. *Applied Nursing Research*, 26, 24-31. doi:10.1016/j.apnr.2012.10.001
- Theorell-Haglöw, J., Berglund, L., Janson, C., & Lindberg, E. (2013). Sleep duration and central obesity in women-differences between short sleepers and long sleepers. *Sleep Medicine*, 13, 1079-1085. doi:10.1016/j.sleep.2012.06.013

- Vijayalaxmi, M. K., George, A., Nambier, N. (2014). A study of general health pattern among shiftwork employees in tertiary care hospital. *Journal of Academia and Industrial Research*, 3(4), 176-183.
- Vimalananda, V., Palmer, J. R., Gerlovin, H., Wise, L. A., Rosenzweig, J. L., Rosenberg, L., . . . Ruiz Narváez, E. A. (2015). Night shift work and incident diabetes among African-American women. *Diabetology*, 58, 699-706. doi:10.1007/s00125-014-3480-9
- Watson, R. (2015). Quantitative research. *Nursing Standard*, 29(31), 44.
- Welford, C., Murphy, K., & Casey, D. (2012). Demystifying nursing research terminology: Part 2. *Nursing Research*, 19(2), 29-35.
- Williams, C. (2007). Research methods. *Journal of Business & Economic Research*, 5(3).
- Williams, R., & Bornmann, L. (2016). Sampling issues in bibliometric analysis. *Journal of Informatics*, 10, 1225-1232. <http://dx.doi.org/10.1016/j.joi.2015.11.004>
- World Health Organization. (2015). Overweight and obesity. Retrieved from www.who.int/mediacentre/factsheets/fs311/en/
- Zhang, X-C., Kuchenke, L., Would, M., Velten, J., & Margraf, J. (2017). Survey methods matters: Online/offline questionnaire and face-to-face or telephone interviews differ. *Computer in Human Behavior*, 17, 172-180.
- Zimberg, I., Dâmaso, A., Del Re, M., Carneiro, A. M., de Sa Souza, H., de Lira, F. S., . . . Túlio de Mello, M. (2012). Short sleep duration and obesity: Mechanisms and future perspectives. *Cell Biochemistry and Function*, 30, 524-529. doi:10.1002.cbf.2832

Appendix A: Invitation Letter

Dear Colleague,

My name is Raymundo Apellido. I am a doctoral student in the College of Health Sciences at Walden University. I am conducting a research study as part of the requirement of my degree in Doctor of Philosophy, and I would like to invite you to participate in this study.

My research study is about the health implications of night shift work among female Filipino nurses. Your voluntary participation to answer the 24-question survey is highly appreciated. Your participation is valuable, and your identity and your responses to the research questions will remain anonymous and confidential.

Thank you very much for your time and participation.

With Kind Regards,

Raymundo Apellido

[Redacted]

[Redacted]

[Redacted]

[Redacted]

Appendix B: Survey Questionnaire

Night Shift Work and Weight Gain Among Female Filipino Nurses

These questions have no “right” or “wrong” answers. Likert-scales are used to gauge the degrees of agreement to the questions.

1. What is your age bracket?
 1. 30 to 34 years old
 2. 35 to 40 years old
 3. 41 to 45 years old
 4. 46 to 50 years old
 5. 51 to 55 years old
 6. Over 55 years old
2. What is your marital status?
 1. Single
 2. Married
 3. Divorced
 4. Separated
 5. Widower
3. What is your status of employment?
 1. Full time (75.0 hours per 2 weeks pay period)
 2. Part time (37.5 hours per 2 weeks pay period)
 3. Per Diem (12.0 hours per week)
4. What is your highest level of nursing education completed?

1. Associate Degree in Nursing or Diploma in Nursing
 2. BSN
 3. MSN/MS
 4. PhD/DNP/ other doctoral level
5. Do you currently work during the night shift (between the hours of 7:00 p. m. and 7:30 a. m)?
1. Yes
 2. No
6. Does your shift ever extend to 12 or more hours?
1. Yes
 - a. 25 % or less
 - b. 26 % to 50%
 - c. 51% or more
 2. No
7. What specialty unit you currently working in?
1. Medical-Surgical Unit
 2. Telemetry Unit
 3. Critical Care Units (ICU, CCU, ER)
 4. Operating Room/ Recovery Room/ Cardiac Catheterization Laboratory
 5. Endoscopy Unit/ Dialysis Unit
 6. Labor and Delivery Unit
 7. Pediatrics Unit

8. Have you ever work the night shift before changing into day shift?

1. Yes
2. No
3. Never

9. How long have you been working on your current shift?

1. 3 to 5 years
2. 6 to 10 years
3. 11 to 15 years
4. 16 to 20 years
5. 21 to 35 years
6. 36 years or more

10. On average, how many hours of sleep do you get between shifts?

1. 3 hours or less
2. 4 hours
3. 5 hours
4. 6 hours
5. 7 hours and above

11. How do you describe your sleep quality?

1. Poor
2. Fair
3. Good
4. Very good

12. What meals do you miss while working?

1. Breakfast

2. Lunch

3. Dinner

4. Snack

13. How often do you miss meals while working?

1. Not at all

2. Sometimes

3. Most of the time

4. Always/ all the time

14. Does eating while working release your stress?

1. No

2. Yes

3. Not at all

4. Maybe

15. How do you replenish your lost energy when you are tired, stressed, have a lack of sleep, or miss a meal while working?

1. Eat fast

2. Consume sugary drink

3. Eat high calorie and fatty foods

4. Taking energy drinks

5. Taking medications to keep you awake

16. How do you describe your overall healthy diet? (CDC, 2014)

1. Poor

2. Fair
3. Good
4. Very Good

17. How tall are you without your shoes? (CDC, 2014)

1. Height in feet and inches_____.
2. Height in meters and centimeters_____.

18. How much do you weigh without your shoes? (CDC, 2014)

1. Weight in pounds_____.
2. Weight in kilograms_____.
3. Refused
- d. Do not know

19. What is your physical activity level?

1. Low
2. Moderate
3. High

20. How often do you engage in exercise after work?

1. Never
2. Sometimes
3. Once a week
4. Twice a week
5. Thrice a week
6. Over 3 times a week

21. On average, how much time do you spend exercising?

1. 15 minutes a day
2. 30 minutes a day
3. 45 minutes a day
4. More than one hour a day

22. How do you handle job stress as an RN after working long hours on night shift?

1. Getting more sleep
2. Tend to overeat
3. Sleep more
4. Taking a walk
5. Cooking
6. Shopping

23. Have you been overweight before working as an RN?

1. Yes
2. No
3. I do not know
4. May be

Appendix C: Perceived Stress Scale

The questions in this scale ask you about your feelings and thoughts during THE LAST MONTH. In each case, you will be asked to indicate your response by placing an “X” over the circle representing HOW OFTEN you felt or thought a certain way.

Although some of the questions are similar, there are differences between them and you should treat each one as a separate question. The best approach is to answer fairly quickly. That is, don’t try to count up the number of times you felt a particular way, but rather indicate the alternative that seems like a reasonable estimate.

	Never	Almost Never	Sometimes	Fairly Often	Very Often
1. In the last month, how often have you been upset because of something that happened unexpectedly?	0	1	2	3	4
2. In the last month, how often have you felt that you were unable to control the important things in your life?	0	1	2	3	4
3. In the last month, how often have you felt nervous and “stressed”?	0	1	2	3	4
4. In the last month, how often have you dealt successfully with day-to-day problems and annoyances?	0	1	2	3	4
5. In the last month, how often have you felt that you were effectively coping with important changes that were occurring in your life?	0	1	2	3	4
6. In the last month, how often have you felt confident about your ability to handle your personal problems?	0	1	2	3	4
7. In the last month, how often have you felt that things were going your way?	0	1	2	3	4
8. In the last month, how often have you found that you could not cope with all the things that you had to do?	0	1	2	3	4
9. In the last month, how often have you been able to control irritations in	0	1	2	3	4

your life?					
10. In the last month, how often have you felt that you were on top of things?	0	1	2	3	4
11. In the last month, how often have you been angered because of things that happened that were outside of your control?	0	1	2	3	4
12. In the last month, how often have you found yourself thinking about things that you have to accomplish?	0	1	2	3	4
13. In the last month, how often have you been able to control the way you spend your time?	0	1	2	3	4
14. In the last month, how often have you felt difficulties were piling up so high that you could not overcome them?	0	1	2	3	4
